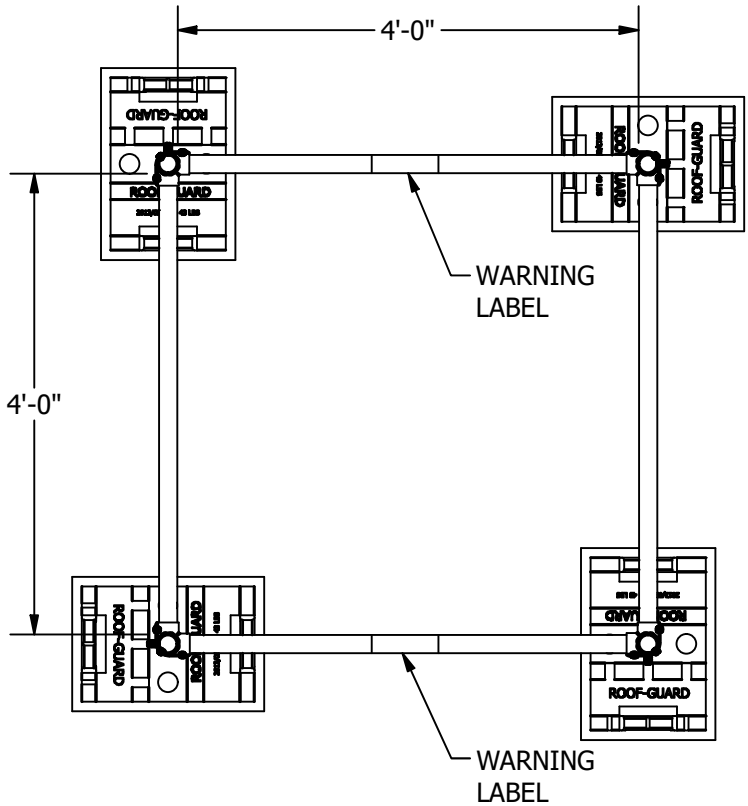
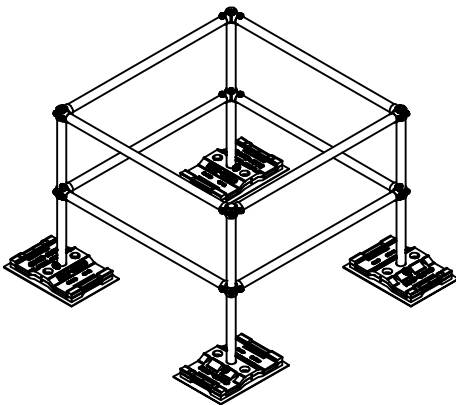



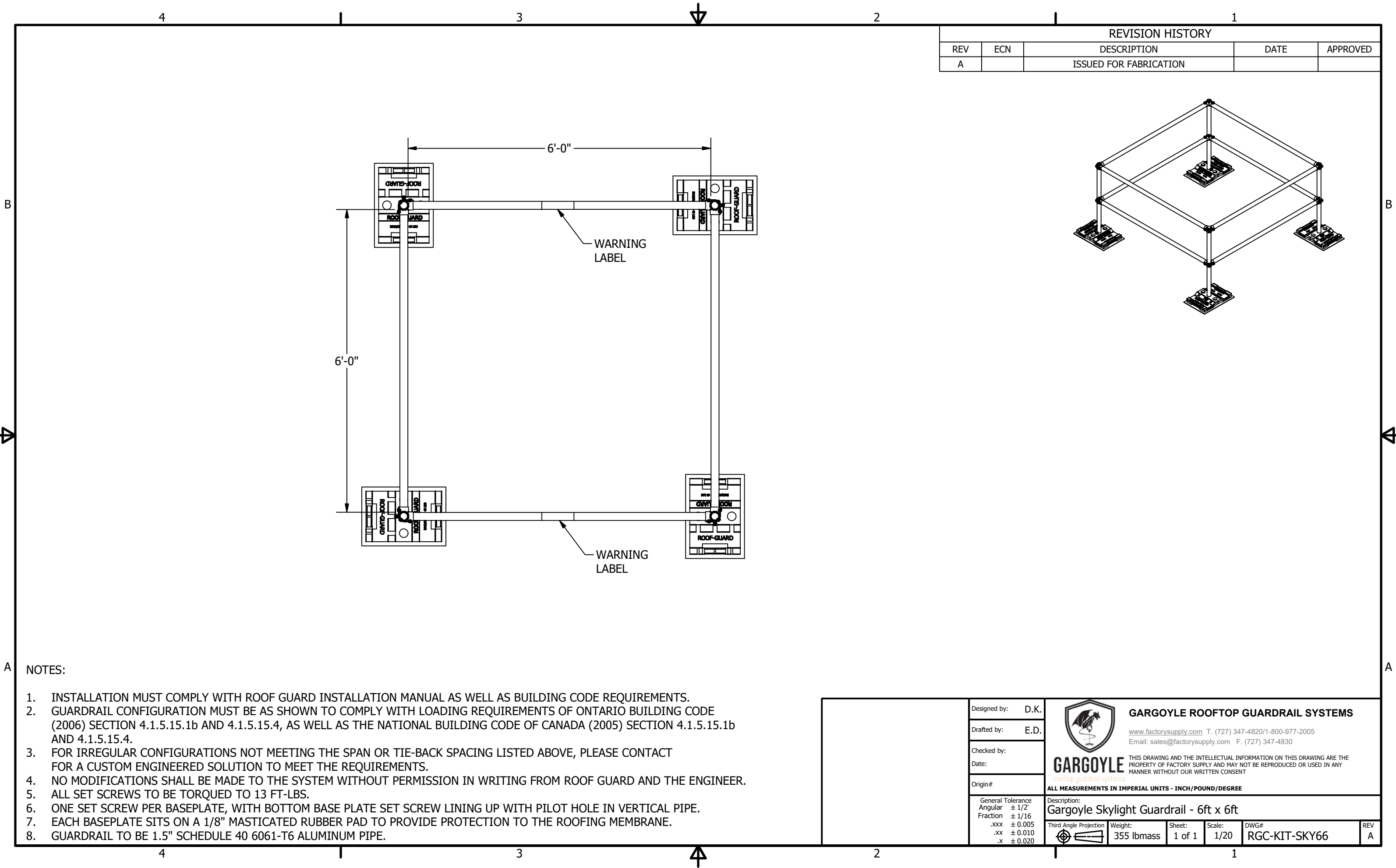
REVISION HISTORY				
REV	ECN	DESCRIPTION	DATE	APPROVED
A		ISSUED FOR FABRICATION		



NOTES:

1. INSTALLATION MUST COMPLY WITH ROOF GUARD INSTALLATION MANUAL AS WELL AS BUILDING CODE REQUIREMENTS.
2. GUARDRAIL CONFIGURATION MUST BE AS SHOWN TO COMPLY WITH LOADING REQUIREMENTS OF ONTARIO BUILDING CODE (2006) SECTION 4.1.5.15.1b AND 4.1.5.15.4, AS WELL AS THE NATIONAL BUILDING CODE OF CANADA (2005) SECTION 4.1.5.15.1b AND 4.1.5.15.4.
3. FOR IRREGULAR CONFIGURATIONS NOT MEETING THE SPAN OR TIE-BACK SPACING LISTED ABOVE, PLEASE CONTACT FOR A CUSTOM ENGINEERED SOLUTION TO MEET THE REQUIREMENTS.
4. NO MODIFICATIONS SHALL BE MADE TO THE SYSTEM WITHOUT PERMISSION IN WRITING FROM ROOF GUARD AND THE ENGINEER.
5. ALL SET SCREWS TO BE TORQUED TO 13 FT-LBS.
6. ONE SET SCREW PER BASEPLATE, WITH BOTTOM BASE PLATE SET SCREW LINING UP WITH PILOT HOLE IN VERTICAL PIPE.
7. EACH BASEPLATE SITS ON A 1/8" MASTICATED RUBBER PAD TO PROVIDE PROTECTION TO THE ROOFING MEMBRANE.
8. GUARDRAIL TO BE 1.5" SCHEDULE 40 6061-T6 ALUMINUM PIPE.

Designed by: D.K. Drafted by: E.D. Checked by: Date: Origin#	 GARGOYLE rooftop guardrail systems	GARGOYLE ROOFTOP GUARDRAIL SYSTEMS		
General Tolerance Angular ± 1/2° Fraction ± 1/16 .xxx ± 0.005 .xx ± 0.010 .x ± 0.020	Description: Gargoyle Skylight Guardrail - 4ft x 4ft	THIS DRAWING AND THE INTELLECTUAL INFORMATION ON THIS DRAWING ARE THE PROPERTY OF FACTORY SUPPLY AND MAY NOT BE REPRODUCED OR USED IN ANY MANNER WITHOUT OUR WRITTEN CONSENT		
Third Angle Projection	Weight: 340 lbmass	Sheet: 1 of 1	Scale: 1/20	
	DWG# RGC-KIT-SKY44		REV A	

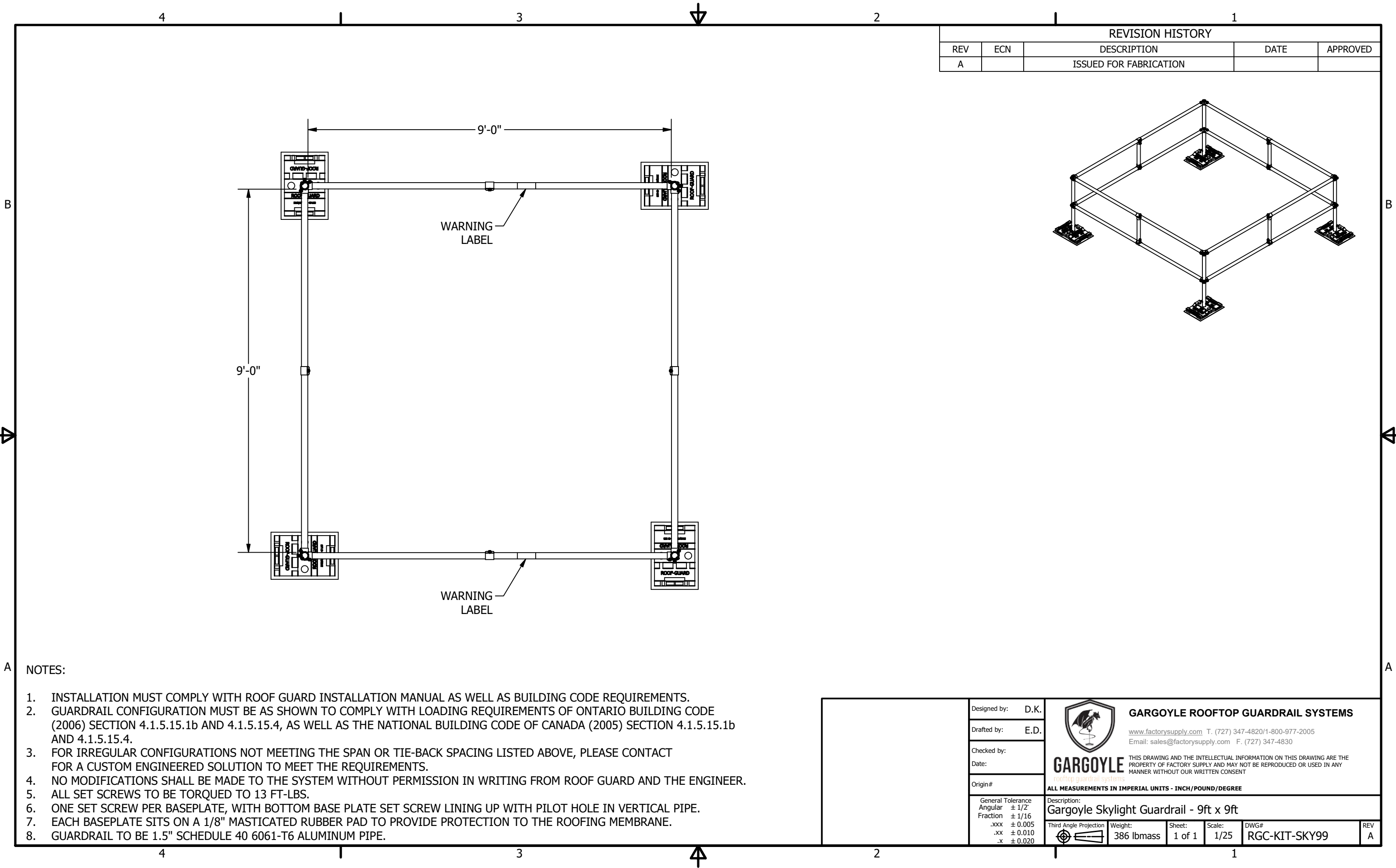


REVISION HISTORY				
REV	ECN	DESCRIPTION	DATE	APPROVED
A		ISSUED FOR FABRICATION		

NOTES:

1. INSTALLATION MUST COMPLY WITH ROOF GUARD INSTALLATION MANUAL AS WELL AS BUILDING CODE REQUIREMENTS.
2. GUARDRAIL CONFIGURATION MUST BE AS SHOWN TO COMPLY WITH LOADING REQUIREMENTS OF ONTARIO BUILDING CODE (2006) SECTION 4.1.5.15.1b AND 4.1.5.15.4, AS WELL AS THE NATIONAL BUILDING CODE OF CANADA (2005) SECTION 4.1.5.15.1b AND 4.1.5.15.4.
3. FOR IRREGULAR CONFIGURATIONS NOT MEETING THE SPAN OR TIE-BACK SPACING LISTED ABOVE, PLEASE CONTACT FOR A CUSTOM ENGINEERED SOLUTION TO MEET THE REQUIREMENTS.
4. NO MODIFICATIONS SHALL BE MADE TO THE SYSTEM WITHOUT PERMISSION IN WRITING FROM ROOF GUARD AND THE ENGINEER.
5. ALL SET SCREWS TO BE TORQUED TO 13 FT-LBS.
6. ONE SET SCREW PER BASEPLATE, WITH BOTTOM BASE PLATE SET SCREW LINING UP WITH PILOT HOLE IN VERTICAL PIPE.
7. EACH BASEPLATE SITS ON A 1/8" MASTICATED RUBBER PAD TO PROVIDE PROTECTION TO THE ROOFING MEMBRANE.
8. GUARDRAIL TO BE 1.5" SCHEDULE 40 6061-T6 ALUMINUM PIPE.

Designed by: D.K.	 GARGOYLE rooftop guardrail systems	GARGOYLE ROOFTOP GUARDRAIL SYSTEMS				
Drafted by: E.D.		www.factorysupply.com T. (727) 347-4820/1-800-977-2005 Email: sales@factorysupply.com F. (727) 347-4830				
Checked by:		THIS DRAWING AND THE INTELLECTUAL INFORMATION ON THIS DRAWING ARE THE PROPERTY OF FACTORY SUPPLY AND MAY NOT BE REPRODUCED OR USED IN ANY MANNER WITHOUT OUR WRITTEN CONSENT				
Date:						
Origin#						
General Tolerance Angular ± 1/2° Fraction ± 1/16 .xxx ± 0.005 .xx ± 0.010 .x ± 0.020	Description: Gargoyle Skylight Guardrail - 6ft x 6ft					
Third Angle Projection		Weight: 355 lbmass	Sheet: 1 of 1	Scale: 1/20	DWG# RGC-KIT-SKY66	REV A



REVISION HISTORY				
REV	ECN	DESCRIPTION	DATE	APPROVED
A		ISSUED FOR FABRICATION		

- NOTES:
1. INSTALLATION MUST COMPLY WITH ROOF GUARD INSTALLATION MANUAL AS WELL AS BUILDING CODE REQUIREMENTS.
 2. GUARDRAIL CONFIGURATION MUST BE AS SHOWN TO COMPLY WITH LOADING REQUIREMENTS OF ONTARIO BUILDING CODE (2006) SECTION 4.1.5.15.1b AND 4.1.5.15.4, AS WELL AS THE NATIONAL BUILDING CODE OF CANADA (2005) SECTION 4.1.5.15.1b AND 4.1.5.15.4.
 3. FOR IRREGULAR CONFIGURATIONS NOT MEETING THE SPAN OR TIE-BACK SPACING LISTED ABOVE, PLEASE CONTACT FOR A CUSTOM ENGINEERED SOLUTION TO MEET THE REQUIREMENTS.
 4. NO MODIFICATIONS SHALL BE MADE TO THE SYSTEM WITHOUT PERMISSION IN WRITING FROM ROOF GUARD AND THE ENGINEER.
 5. ALL SET SCREWS TO BE TORQUED TO 13 FT-LBS.
 6. ONE SET SCREW PER BASEPLATE, WITH BOTTOM BASE PLATE SET SCREW LINING UP WITH PILOT HOLE IN VERTICAL PIPE.
 7. EACH BASEPLATE SITS ON A 1/8" MASTICATED RUBBER PAD TO PROVIDE PROTECTION TO THE ROOFING MEMBRANE.
 8. GUARDRAIL TO BE 1.5" SCHEDULE 40 6061-T6 ALUMINUM PIPE.

Designed by: D.K.	<div>GARGOYLE ROOFTOP GUARDRAIL SYSTEMS www.factorysupply.com T. (727) 347-4820/1-800-977-2005 Email: sales@factorysupply.com F. (727) 347-4830 <small>THIS DRAWING AND THE INTELLECTUAL INFORMATION ON THIS DRAWING ARE THE PROPERTY OF FACTORY SUPPLY AND MAY NOT BE REPRODUCED OR USED IN ANY MANNER WITHOUT OUR WRITTEN CONSENT</small></div>				
Drafted by: E.D.					
Checked by:					
Date:					
Origin#	ALL MEASUREMENTS IN IMPERIAL UNITS - INCH/POUND/DEGREE				
General Tolerance Angular ± 1/2° Fraction ± 1/16 .xxx ± 0.005 .xx ± 0.010 .x ± 0.020	Description: Gargoyle Skylight Guardrail - 9ft x 9ft				
	Weight: 386 lbmass	Sheet: 1 of 1	Scale: 1/25	DWG# RGC-KIT-SKY99	REV A