
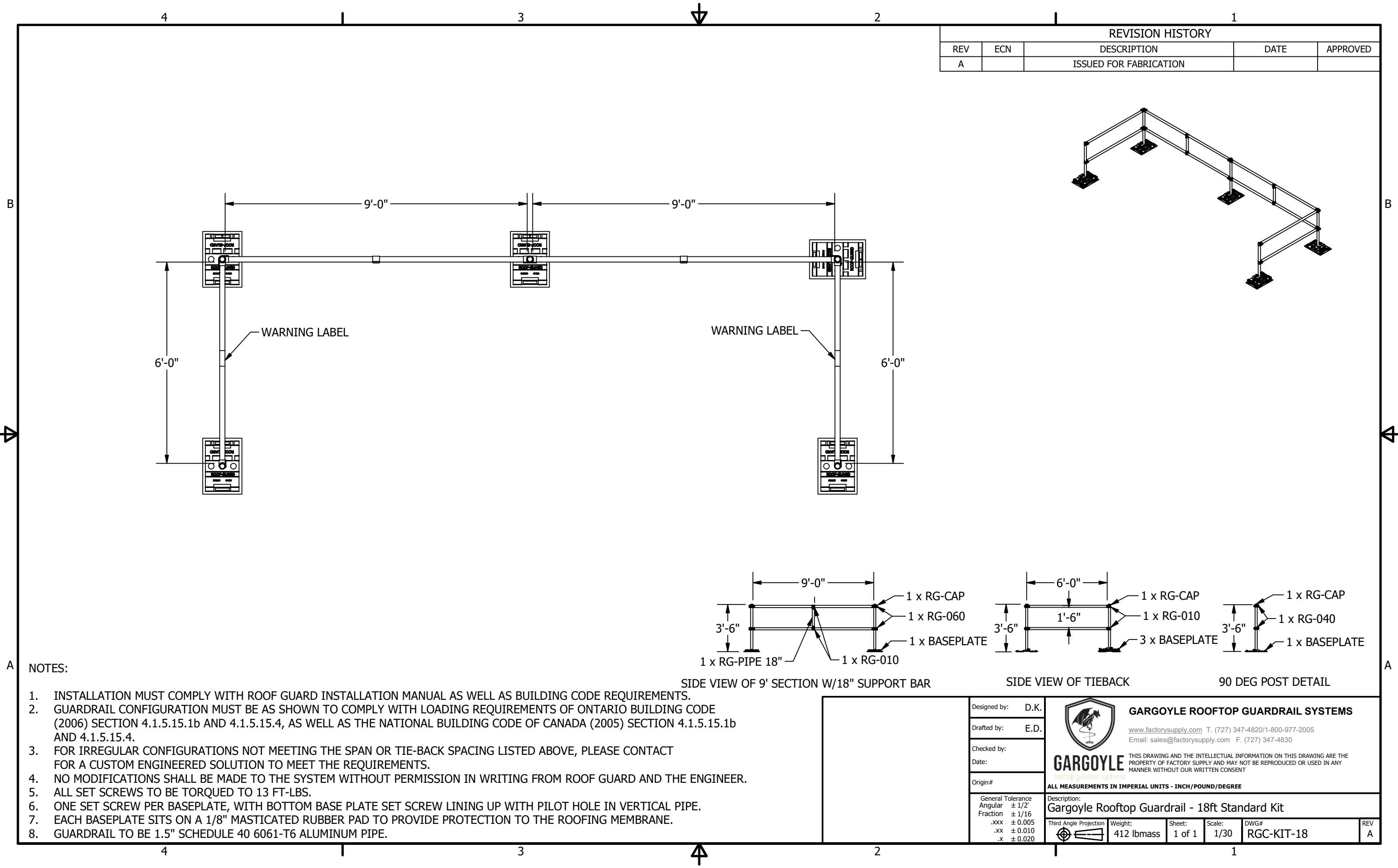


REVISION HISTORY				
REV	ECN	DESCRIPTION	DATE	APPROVED
A		ISSUED FOR FABRICATION		

NOTES:

1. INSTALLATION MUST COMPLY WITH ROOF GUARD INSTALLATION MANUAL AS WELL AS BUILDING CODE REQUIREMENTS.
2. GUARDRAIL CONFIGURATION MUST BE AS SHOWN TO COMPLY WITH LOADING REQUIREMENTS OF ONTARIO BUILDING CODE (2006) SECTION 4.1.5.15.1b AND 4.1.5.15.4, AS WELL AS THE NATIONAL BUILDING CODE OF CANADA (2005) SECTION 4.1.5.15.1b AND 4.1.5.15.4.
3. FOR IRREGULAR CONFIGURATIONS NOT MEETING THE SPAN OR TIE-BACK SPACING LISTED ABOVE, PLEASE CONTACT FOR A CUSTOM ENGINEERED SOLUTION TO MEET THE REQUIREMENTS.
4. NO MODIFICATIONS SHALL BE MADE TO THE SYSTEM WITHOUT PERMISSION IN WRITING FROM ROOF GUARD AND THE ENGINEER.
5. ALL SET SCREWS TO BE TORQUED TO 13 FT-LBS.
6. ONE SET SCREW PER BASEPLATE, WITH BOTTOM BASE PLATE SET SCREW LINING UP WITH PILOT HOLE IN VERTICAL PIPE.
7. EACH BASEPLATE SITS ON A 1/8" MASTICATED RUBBER PAD TO PROVIDE PROTECTION TO THE ROOFING MEMBRANE.
8. GUARDRAIL TO BE 1.5" SCHEDULE 40 6061-T6 ALUMINUM PIPE.

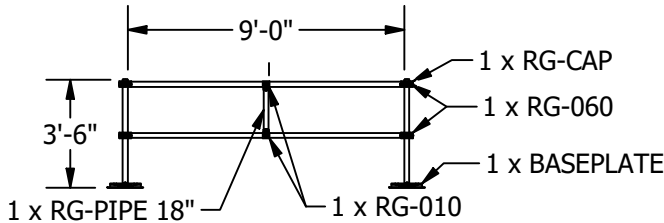
Designed by: D.K.	<div><b>GARGOYLE ROOFTOP GUARDRAIL SYSTEMS</b> <a href="http://www.factorysupply.com">www.factorysupply.com</a> T. (727) 347-4820/1-800-977-2005 Email: <a href="mailto:sales@factorysupply.com">sales@factorysupply.com</a> F. (727) 347-4830  THIS DRAWING AND THE INTELLECTUAL INFORMATION ON THIS DRAWING ARE THE PROPERTY OF FACTORY SUPPLY AND MAY NOT BE REPRODUCED OR USED IN ANY MANNER WITHOUT OUR WRITTEN CONSENT</div>					
Drafted by: E.D.						
Checked by:						
Date:						
Origin#	<b>ALL MEASUREMENTS IN IMPERIAL UNITS - INCH/POUND/DEGREE</b>					
General Tolerance Angular ± 1/2° Fraction ± 1/16 .xxx ± 0.005 .xx ± 0.010 .x ± 0.020		Description: Gargoyle Rooftop Guardrail - 12ft Standard Kit				
		Weight: 397 lbmass	Sheet: 1 of 1	Scale: 1/30	DWG# RGC-KIT-12	REV A



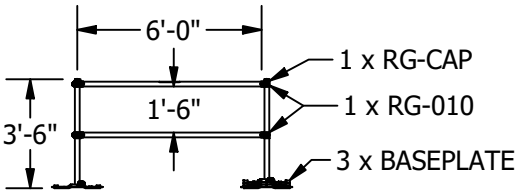
REVISION HISTORY				
REV	ECN	DESCRIPTION	DATE	APPROVED
A		ISSUED FOR FABRICATION		

NOTES:

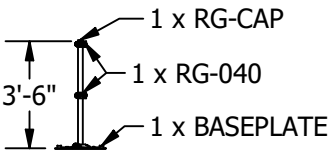
1. INSTALLATION MUST COMPLY WITH ROOF GUARD INSTALLATION MANUAL AS WELL AS BUILDING CODE REQUIREMENTS.
2. GUARDRAIL CONFIGURATION MUST BE AS SHOWN TO COMPLY WITH LOADING REQUIREMENTS OF ONTARIO BUILDING CODE (2006) SECTION 4.1.5.15.1b AND 4.1.5.15.4, AS WELL AS THE NATIONAL BUILDING CODE OF CANADA (2005) SECTION 4.1.5.15.1b AND 4.1.5.15.4.
3. FOR IRREGULAR CONFIGURATIONS NOT MEETING THE SPAN OR TIE-BACK SPACING LISTED ABOVE, PLEASE CONTACT FOR A CUSTOM ENGINEERED SOLUTION TO MEET THE REQUIREMENTS.
4. NO MODIFICATIONS SHALL BE MADE TO THE SYSTEM WITHOUT PERMISSION IN WRITING FROM ROOF GUARD AND THE ENGINEER.
5. ALL SET SCREWS TO BE TORQUED TO 13 FT-LBS.
6. ONE SET SCREW PER BASEPLATE, WITH BOTTOM BASE PLATE SET SCREW LINING UP WITH PILOT HOLE IN VERTICAL PIPE.
7. EACH BASEPLATE SITS ON A 1/8" MASTICATED RUBBER PAD TO PROVIDE PROTECTION TO THE ROOFING MEMBRANE.
8. GUARDRAIL TO BE 1.5" SCHEDULE 40 6061-T6 ALUMINUM PIPE.




SIDE VIEW OF 9' SECTION W/18" SUPPORT BAR



SIDE VIEW OF TIEBACK



90 DEG POST DETAIL

Designed by: D.K. Drafted by: E.D. Checked by: Date: Origin#	 <b>GARGOYLE ROOFTOP GUARDRAIL SYSTEMS</b> <a href="http://www.factorysupply.com">www.factorysupply.com</a> T. (727) 347-4820/1-800-977-2005 Email: <a href="mailto:sales@factorysupply.com">sales@factorysupply.com</a> F. (727) 347-4830		THIS DRAWING AND THE INTELLECTUAL INFORMATION ON THIS DRAWING ARE THE PROPERTY OF FACTORY SUPPLY AND MAY NOT BE REPRODUCED OR USED IN ANY MANNER WITHOUT OUR WRITTEN CONSENT		
			ALL MEASUREMENTS IN IMPERIAL UNITS - INCH/POUND/DEGREE		
			Description: Gargoyle Rooftop Guardrail - 18ft Standard Kit		
			Third Angle Projection	Weight: 412 lbmass	Sheet: 1 of 1
			Scale: 1/30	DWG# RGC-KIT-18	REV A

