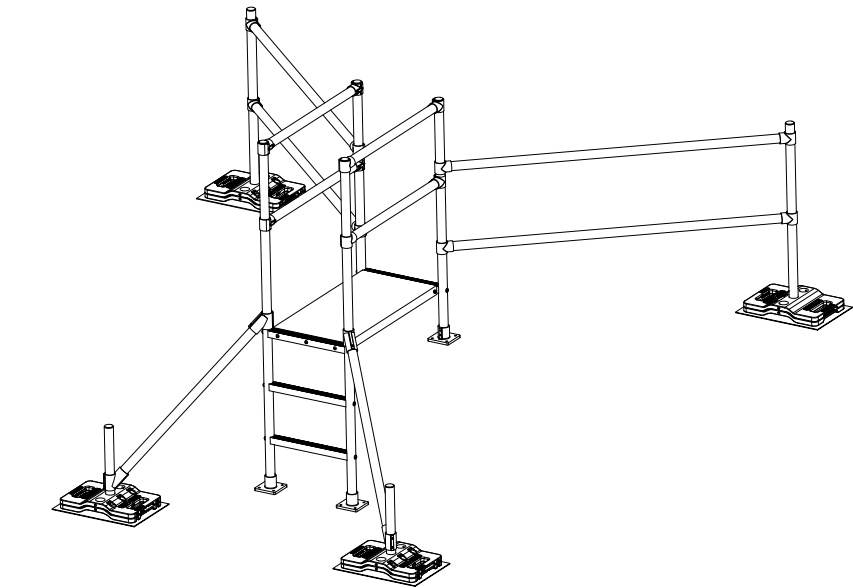

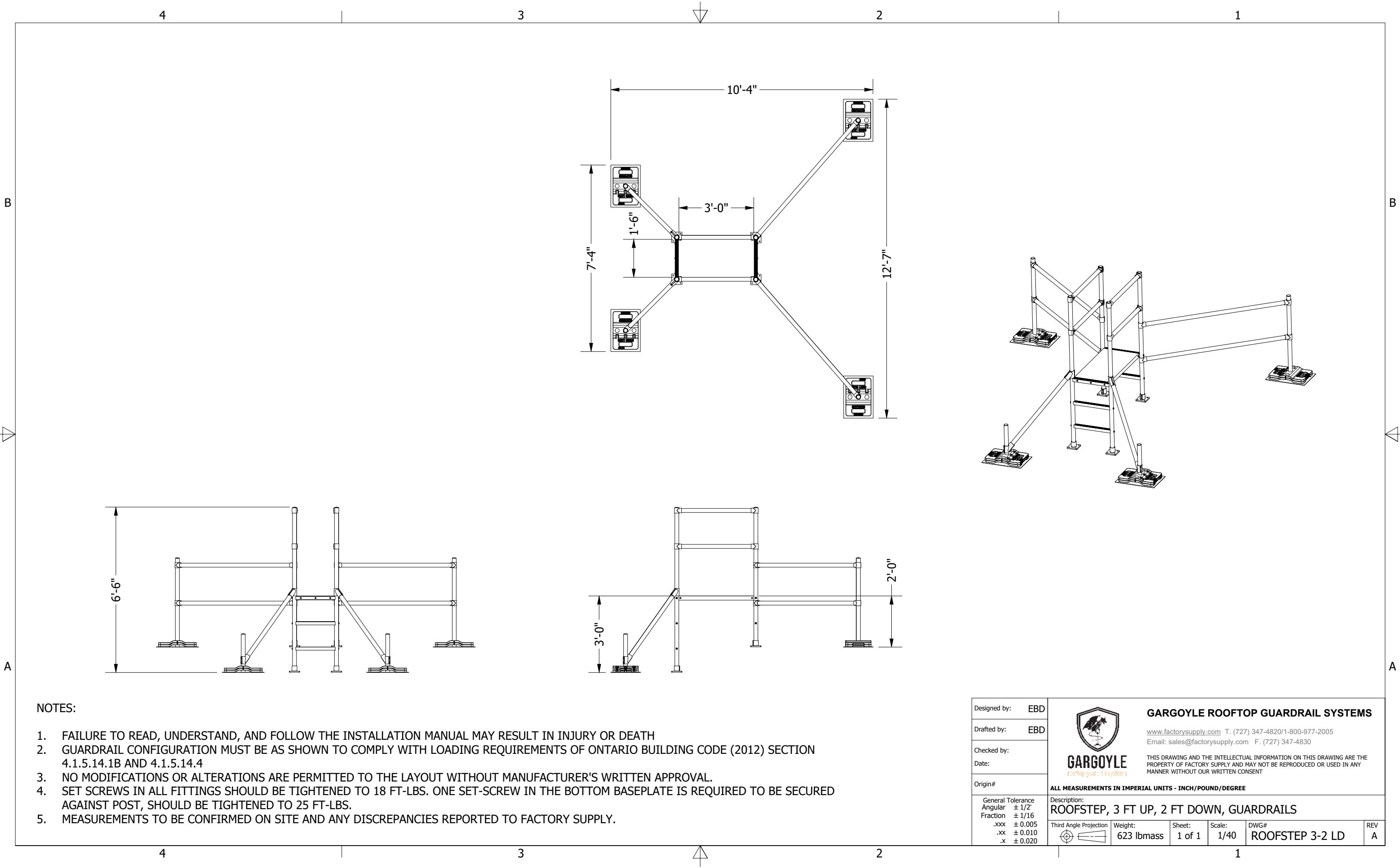


NOTES:


1. FAILURE TO READ, UNDERSTAND, AND FOLLOW THE INSTALLATION MANUAL MAY RESULT IN INJURY OR DEATH
2. GUARDRAIL CONFIGURATION MUST BE AS SHOWN TO COMPLY WITH LOADING REQUIREMENTS OF ONTARIO BUILDING CODE (2012) SECTION 4.1.5.14.1B AND 4.1.5.14.4
3. NO MODIFICATIONS OR ALTERATIONS ARE PERMITTED TO THE LAYOUT WITHOUT MANUFACTURER'S WRITTEN APPROVAL.
4. SET SCREWS IN ALL FITTINGS SHOULD BE TIGHTENED TO 18 FT-LBS. ONE SET-SCREW IN THE BOTTOM BASEPLATE IS REQUIRED TO BE SECURED AGAINST POST, SHOULD BE TIGHTENED TO 25 FT-LBS.
5. MEASUREMENTS TO BE CONFIRMED ON SITE AND ANY DISCREPANCIES REPORTED TO FACTORY SUPPLY.

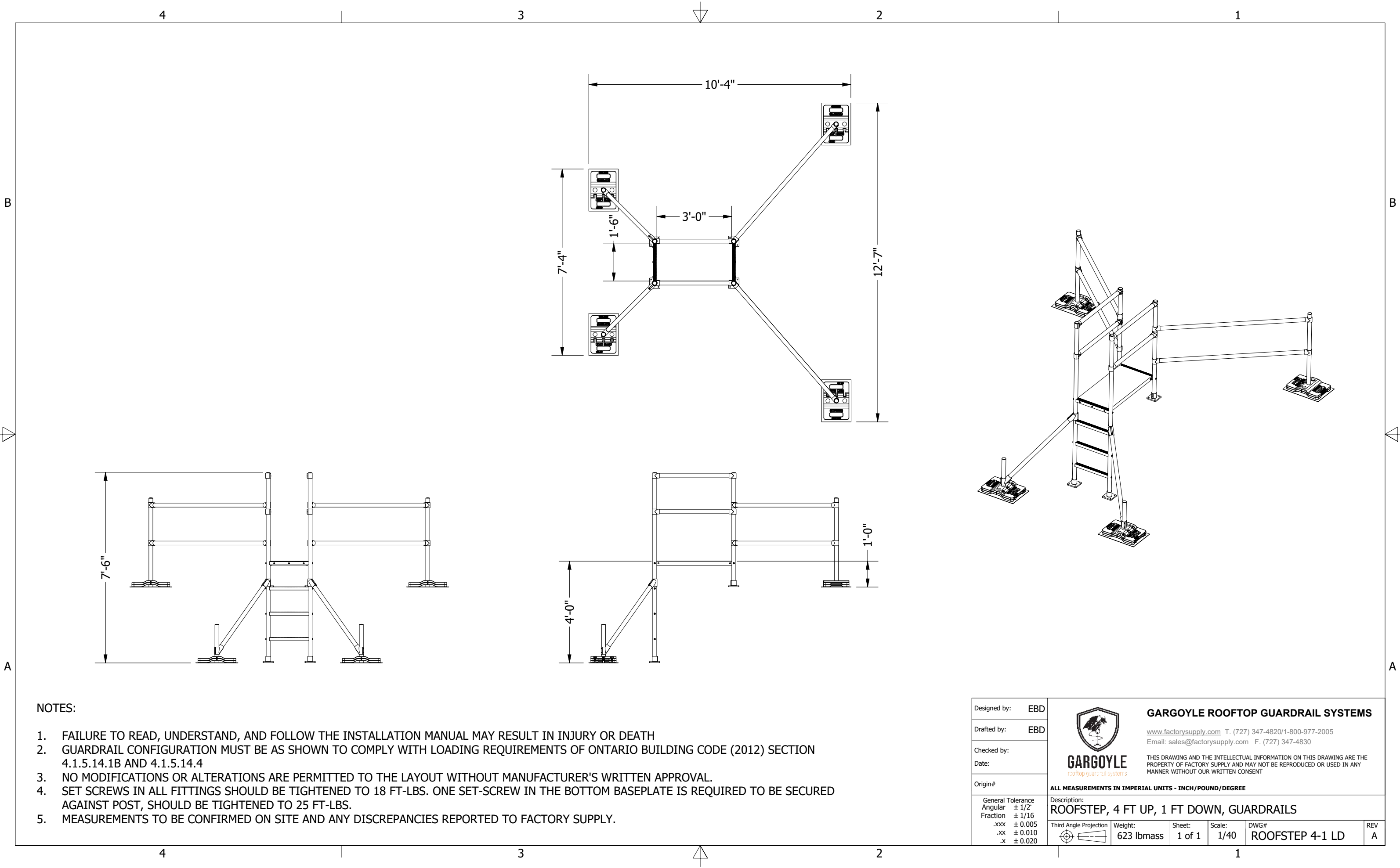


Designed by:	EBD	<div> GARGOYLE rooftop guardrail systems</div>	GARGOYLE ROOFTOP GUARDRAIL SYSTEMS				
Drafted by:	EBD		www.factorysupply.com T. (727) 347-4820/1-800-977-2005 Email: sales@factorysupply.com F. (727) 347-4830				
Checked by:			THIS DRAWING AND THE INTELLECTUAL INFORMATION ON THIS DRAWING ARE THE PROPERTY OF FACTORY SUPPLY AND MAY NOT BE REPRODUCED OR USED IN ANY MANNER WITHOUT OUR WRITTEN CONSENT				
Date:							
Origin#							
ALL MEASUREMENTS IN IMPERIAL UNITS - INCH/POUND/DEGREE							
Description:		<div><div>ROOFSTEP, 3 FT UP, 1 FT DOWN, GUARDRAILS</div><div><div>Third Angle Projection</div><div>Weight: 606 lbmass</div><div>Sheet: 1 of 1</div><div>Scale: 1/40</div><div>DWG# ROOFSTEP 3-1 LD</div><div>REV A</div></div></div>					
General Tolerance							
Angular							
Fraction							
.xxx							
.xx							
.x							
± 1/2"							
± 1/16							
± 0.005							
± 0.010							
± 0.020							




- NOTES:
- 1. FAILURE TO READ, UNDERSTAND, AND FOLLOW THE INSTALLATION MANUAL MAY RESULT IN INJURY OR DEATH
 - 2. GUARDRAIL CONFIGURATION MUST BE AS SHOWN TO COMPLY WITH LOADING REQUIREMENTS OF ONTARIO BUILDING CODE (2012) SECTION 4.1.5.14.1B AND 4.1.5.14.4
 - 3. NO MODIFICATIONS OR ALTERATIONS ARE PERMITTED TO THE LAYOUT WITHOUT MANUFACTURER'S WRITTEN APPROVAL.
 - 4. SET SCREWS IN ALL FITTINGS SHOULD BE TIGHTENED TO 18 FT-LBS. ONE SET-SCREW IN THE BOTTOM BASEPLATE IS REQUIRED TO BE SECURED AGAINST POST, SHOULD BE TIGHTENED TO 25 FT-LBS.
 - 5. MEASUREMENTS TO BE CONFIRMED ON SITE AND ANY DISCREPANCIES REPORTED TO FACTORY SUPPLY.

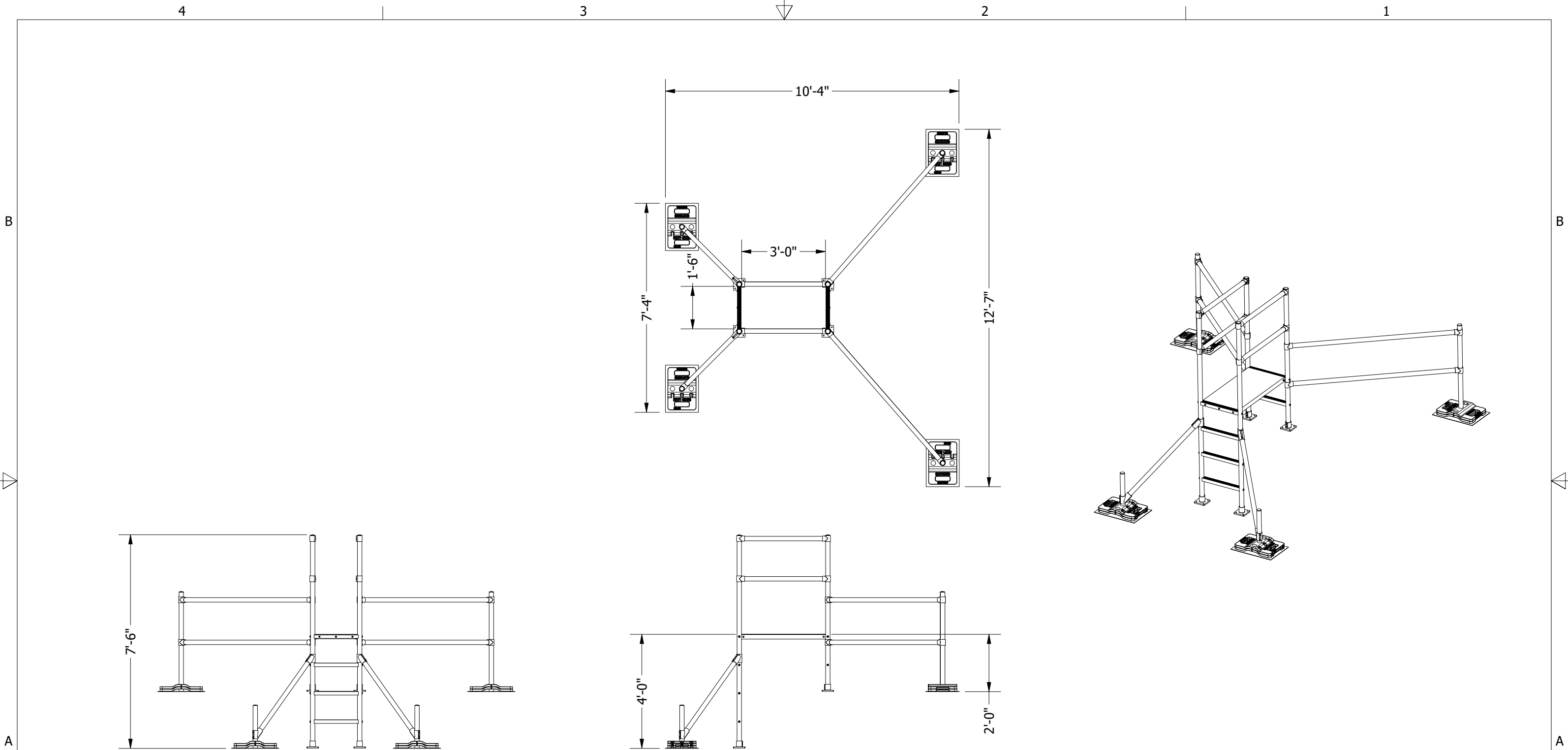
Designed by:	EBD	<div>GARGOYLE rooftop guardrail systems</div> <div>GARGOYLE ROOFTOP GUARDRAIL SYSTEMS</div> <div>www.factorysupply.com T. (727) 347-4820/1-800-977-2005 Email: sales@factorysupply.com F. (727) 347-4830</div> <div>THIS DRAWING AND THE INTELLECTUAL INFORMATION ON THIS DRAWING ARE THE PROPERTY OF FACTORY SUPPLY AND MAY NOT BE REPRODUCED OR USED IN ANY MANNER WITHOUT OUR WRITTEN CONSENT</div>			
Drafted by:	EBD				
Checked by:					
Date:					
Origin#		ALL MEASUREMENTS IN IMPERIAL UNITS - INCH/POUND/DEGREE			
General Tolerance Angular ± 1/2° Fraction ± 1/16 .xxx ± 0.005 .xx ± 0.010 .x ± 0.020	Description: ROOFSTEP, 3 FT UP, 2 FT DOWN, GUARDRAILS				
Third Angle Projection	Weight: 623 lbmass	Sheet: 1 of 1	Scale: 1/40	DWG# ROOFSTEP 3-2 LD	REV A



NOTES:


1. FAILURE TO READ, UNDERSTAND, AND FOLLOW THE INSTALLATION MANUAL MAY RESULT IN INJURY OR DEATH
2. GUARDRAIL CONFIGURATION MUST BE AS SHOWN TO COMPLY WITH LOADING REQUIREMENTS OF ONTARIO BUILDING CODE (2012) SECTION 4.1.5.14.1B AND 4.1.5.14.4
3. NO MODIFICATIONS OR ALTERATIONS ARE PERMITTED TO THE LAYOUT WITHOUT MANUFACTURER'S WRITTEN APPROVAL.
4. SET SCREWS IN ALL FITTINGS SHOULD BE TIGHTENED TO 18 FT-LBS. ONE SET-SCREW IN THE BOTTOM BASEPLATE IS REQUIRED TO BE SECURED AGAINST POST, SHOULD BE TIGHTENED TO 25 FT-LBS.
5. MEASUREMENTS TO BE CONFIRMED ON SITE AND ANY DISCREPANCIES REPORTED TO FACTORY SUPPLY.

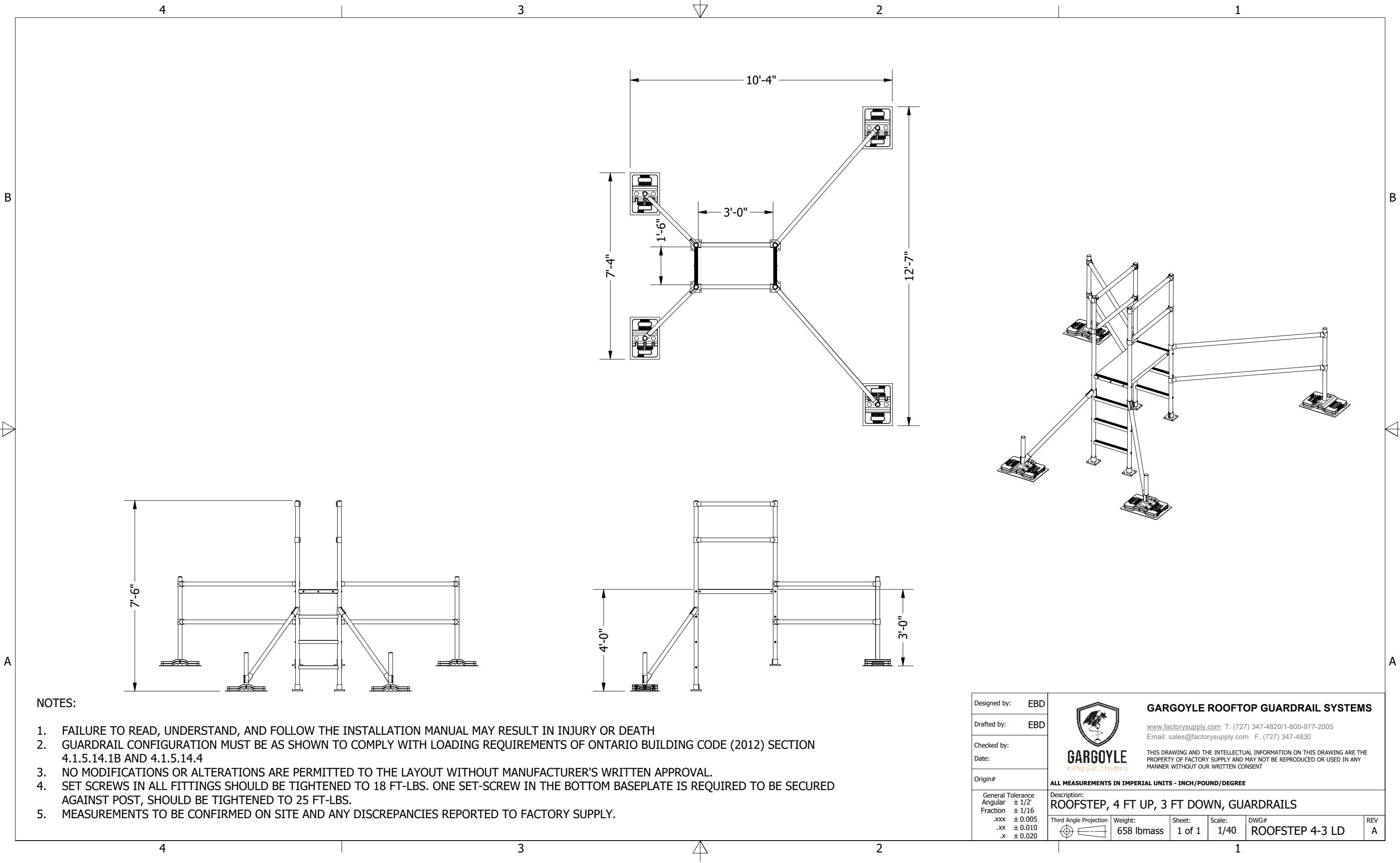
Designed by:	EBD	<div>GARGOYLE rooftop guardrail systems</div> <div>GARGOYLE ROOFTOP GUARDRAIL SYSTEMS</div> <div>www.factorysupply.com T. (727) 347-4820/1-800-977-2005 Email: sales@factorysupply.com F. (727) 347-4830</div> <div>THIS DRAWING AND THE INTELLECTUAL INFORMATION ON THIS DRAWING ARE THE PROPERTY OF FACTORY SUPPLY AND MAY NOT BE REPRODUCED OR USED IN ANY MANNER WITHOUT OUR WRITTEN CONSENT</div>					
Drafted by:	EBD						
Checked by:							
Date:							
Origin#		ALL MEASUREMENTS IN IMPERIAL UNITS - INCH/POUND/DEGREE					
General Tolerance	± 1/2"	Description: ROOFSTEP, 4 FT UP, 1 FT DOWN, GUARDRAILS					
Angular	± 1/16						
Fraction	± 0.005						
.xxx	± 0.010						
.xx	± 0.020	Third Angle Projection	Weight: 623 lbmass	Sheet: 1 of 1	Scale: 1/40	DWG# ROOFSTEP 4-1 LD	REV A



NOTES:


1. FAILURE TO READ, UNDERSTAND, AND FOLLOW THE INSTALLATION MANUAL MAY RESULT IN INJURY OR DEATH
2. GUARDRAIL CONFIGURATION MUST BE AS SHOWN TO COMPLY WITH LOADING REQUIREMENTS OF ONTARIO BUILDING CODE (2012) SECTION 4.1.5.14.1B AND 4.1.5.14.4
3. NO MODIFICATIONS OR ALTERATIONS ARE PERMITTED TO THE LAYOUT WITHOUT MANUFACTURER'S WRITTEN APPROVAL.
4. SET SCREWS IN ALL FITTINGS SHOULD BE TIGHTENED TO 18 FT-LBS. ONE SET-SCREW IN THE BOTTOM BASEPLATE IS REQUIRED TO BE SECURED AGAINST POST, SHOULD BE TIGHTENED TO 25 FT-LBS.
5. MEASUREMENTS TO BE CONFIRMED ON SITE AND ANY DISCREPANCIES REPORTED TO FACTORY SUPPLY.

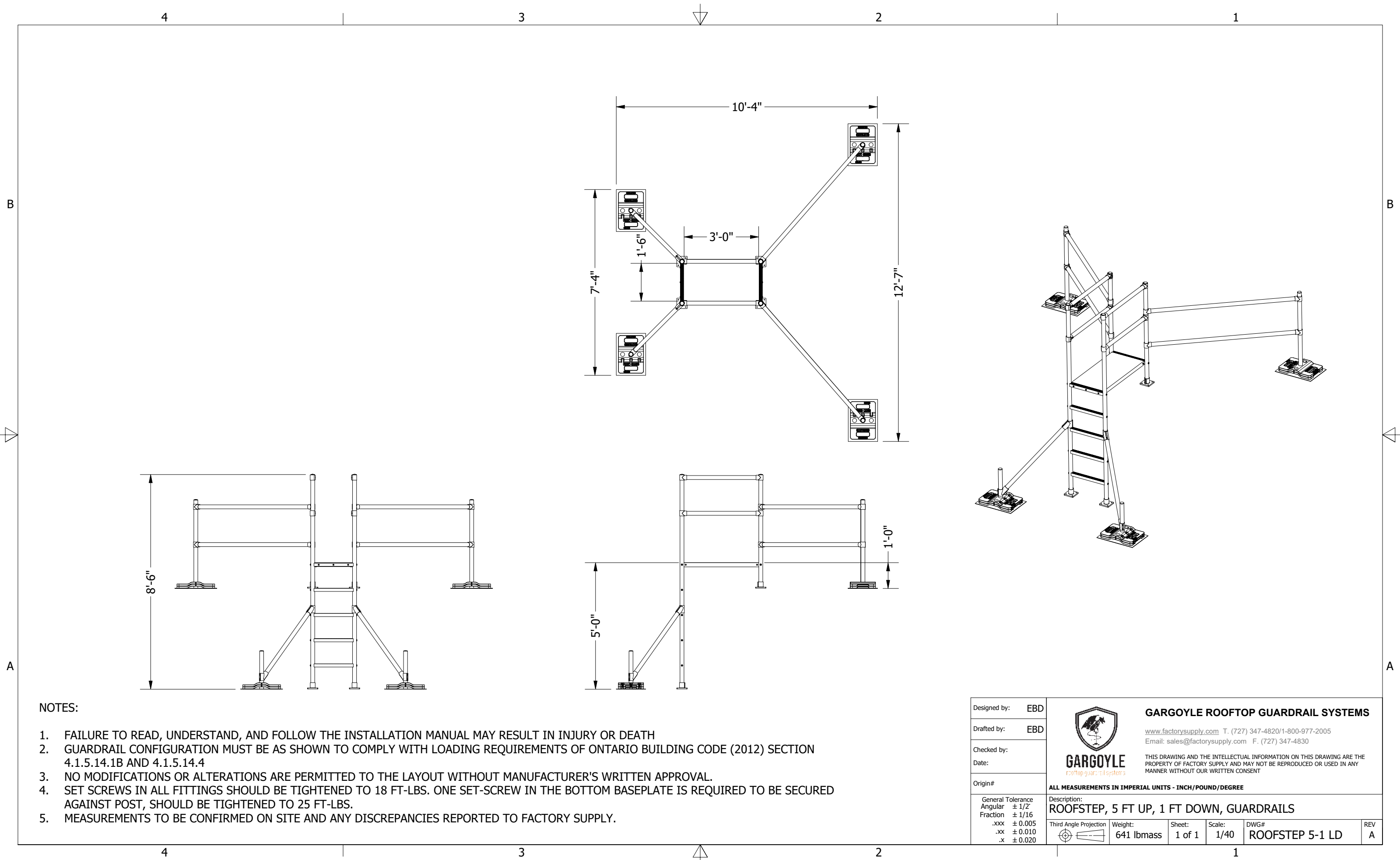
Designed by:	EBD	<div>GARGOYLE rooftop guardrail systems</div> <div>GARGOYLE ROOFTOP GUARDRAIL SYSTEMS www.factorysupply.com T. (727) 347-4820/1-800-977-2005 Email: sales@factorysupply.com F. (727) 347-4830 THIS DRAWING AND THE INTELLECTUAL INFORMATION ON THIS DRAWING ARE THE PROPERTY OF FACTORY SUPPLY AND MAY NOT BE REPRODUCED OR USED IN ANY MANNER WITHOUT OUR WRITTEN CONSENT</div>				
Drafted by:	EBD					
Checked by:						
Date:						
Origin#		ALL MEASUREMENTS IN IMPERIAL UNITS - INCH/POUND/DEGREE				
Description:		<div><div>ROOFSTEP, 4 FT UP, 2 FT DOWN, GUARDRAILS</div><div><div>Third Angle Projection</div><div>Weight: 641 lbmass</div><div>Sheet: 1 of 1</div><div>Scale: 1/40</div><div>DWG# ROOFSTEP 4-2 LD</div><div>REV A</div></div></div>				
General Tolerance	± 1/2"					
Angular	± 1/2°					
Fraction	± 1/16					
.xxx	± 0.005					
.xx	± 0.010					
.x	± 0.020					



NOTES:


- 1. FAILURE TO READ, UNDERSTAND, AND FOLLOW THE INSTALLATION MANUAL MAY RESULT IN INJURY OR DEATH
- 2. GUARDRAIL CONFIGURATION MUST BE AS SHOWN TO COMPLY WITH LOADING REQUIREMENTS OF ONTARIO BUILDING CODE (2012) SECTION 4.1.5.14.1B AND 4.1.5.14.4
- 3. NO MODIFICATIONS OR ALTERATIONS ARE PERMITTED TO THE LAYOUT WITHOUT MANUFACTURER'S WRITTEN APPROVAL.
- 4. SET SCREWS IN ALL FITTINGS SHOULD BE TIGHTENED TO 18 FT-LBS. ONE SET-SCREW IN THE BOTTOM BASEPLATE IS REQUIRED TO BE SECURED AGAINST POST, SHOULD BE TIGHTENED TO 25 FT-LBS.
- 5. MEASUREMENTS TO BE CONFIRMED ON SITE AND ANY DISCREPANCIES REPORTED TO FACTORY SUPPLY.

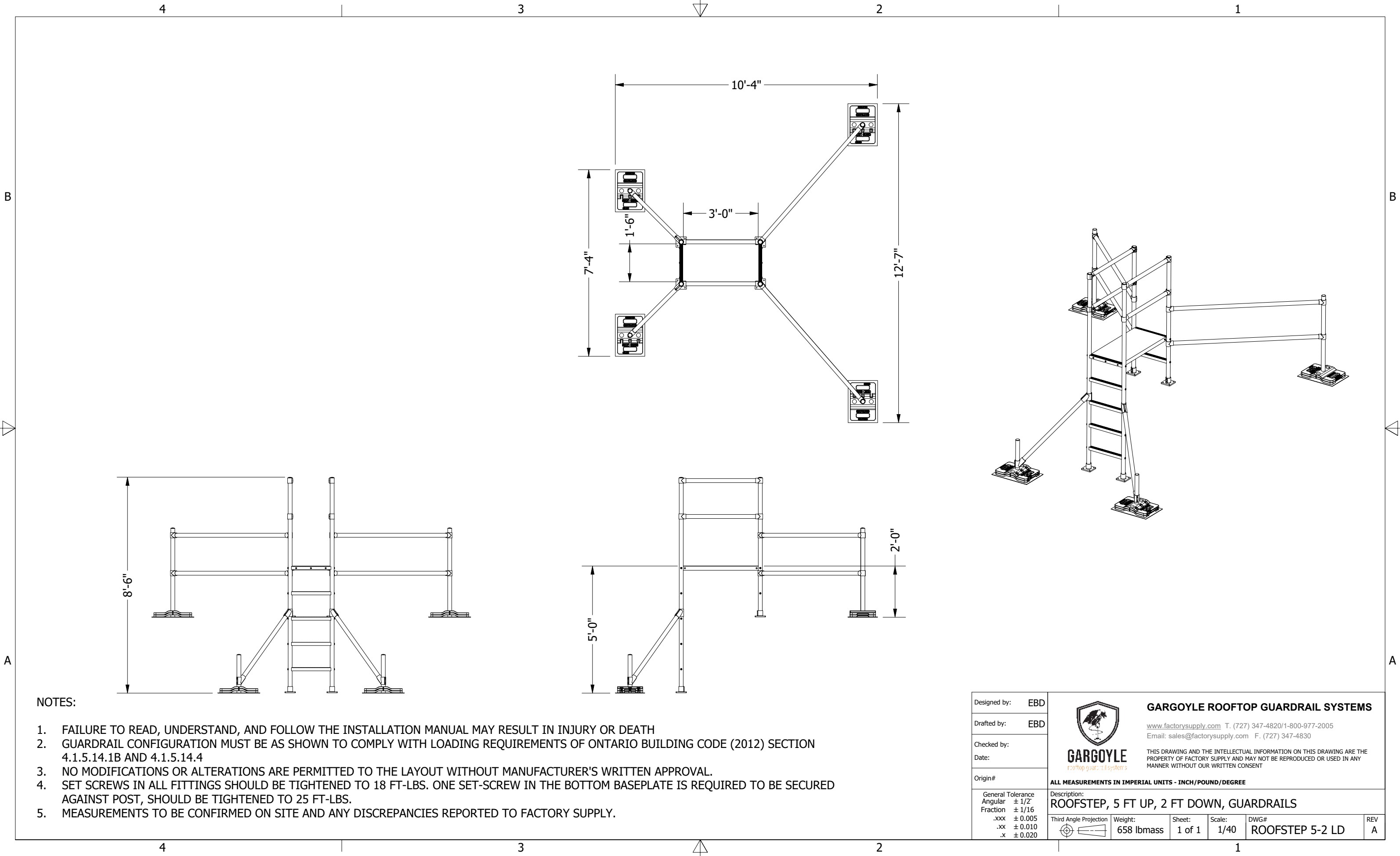
Designed by: EBD		<div>GARGOYLE rooftop guardrail systems</div> <div>GARGOYLE ROOFTOP GUARDRAIL SYSTEMS</div> <div>www.factorysupply.com T. (727) 347-4820/1-800-977-2005 Email: sales@factorysupply.com F. (727) 347-4830</div> <div>THIS DRAWING AND THE INTELLECTUAL INFORMATION ON THIS DRAWING ARE THE PROPERTY OF FACTORY SUPPLY AND MAY NOT BE REPRODUCED OR USED IN ANY MANNER WITHOUT OUR WRITTEN CONSENT</div>				
Drafted by: EBD						
Checked by:						
Date:						
Origin#		ALL MEASUREMENTS IN IMPERIAL UNITS - INCH/POUND/DEGREE				
General Tolerance ± 1/2" Angular ± 1/16" Fraction ± 0.005 .xxx ± 0.010 .xx ± 0.020 .x		Description: ROOFSTEP, 4 FT UP, 3 FT DOWN, GUARDRAILS				
Third Angle Projection		Weight: 658 lbmass	Sheet: 1 of 1	Scale: 1/40	DWG# ROOFSTEP 4-3 LD	REV A





NOTES:

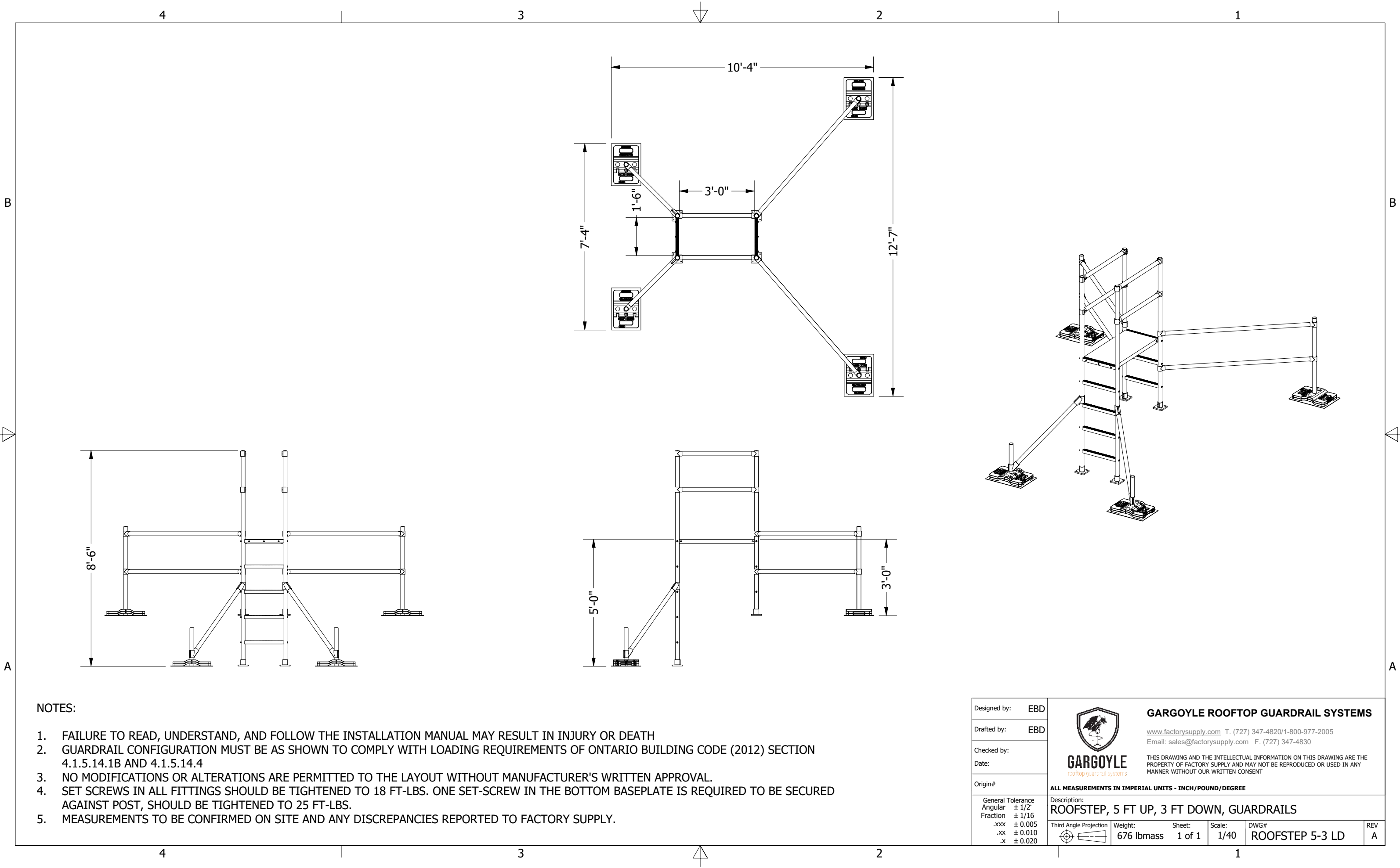
1. FAILURE TO READ, UNDERSTAND, AND FOLLOW THE INSTALLATION MANUAL MAY RESULT IN INJURY OR DEATH
2. GUARDRAIL CONFIGURATION MUST BE AS SHOWN TO COMPLY WITH LOADING REQUIREMENTS OF ONTARIO BUILDING CODE (2012) SECTION 4.1.5.14.1B AND 4.1.5.14.4
3. NO MODIFICATIONS OR ALTERATIONS ARE PERMITTED TO THE LAYOUT WITHOUT MANUFACTURER'S WRITTEN APPROVAL.
4. SET SCREWS IN ALL FITTINGS SHOULD BE TIGHTENED TO 18 FT-LBS. ONE SET-SCREW IN THE BOTTOM BASEPLATE IS REQUIRED TO BE SECURED AGAINST POST, SHOULD BE TIGHTENED TO 25 FT-LBS.
5. MEASUREMENTS TO BE CONFIRMED ON SITE AND ANY DISCREPANCIES REPORTED TO FACTORY SUPPLY.

Designed by: EBD	 GARGOYLE rooftop guardrail systems	GARGOYLE ROOFTOP GUARDRAIL SYSTEMS				
Drafted by: EBD		www.factorysupply.com T. (727) 347-4820/1-800-977-2005 Email: sales@factorysupply.com F. (727) 347-4830				
Checked by:		THIS DRAWING AND THE INTELLECTUAL INFORMATION ON THIS DRAWING ARE THE PROPERTY OF FACTORY SUPPLY AND MAY NOT BE REPRODUCED OR USED IN ANY MANNER WITHOUT OUR WRITTEN CONSENT				
Date:						
Origin#	ALL MEASUREMENTS IN IMPERIAL UNITS - INCH/POUND/DEGREE					
General Tolerance Angular ± 1/2° Fraction ± 1/16 .xxx ± 0.005 .xx ± 0.010 .x ± 0.020	Description: ROOFSTEP, 5 FT UP, 1 FT DOWN, GUARDRAILS					
Third Angle Projection	Weight: 641 lbmass	Sheet: 1 of 1	Scale: 1/40	DWG# ROOFSTEP 5-1 LD	REV A	




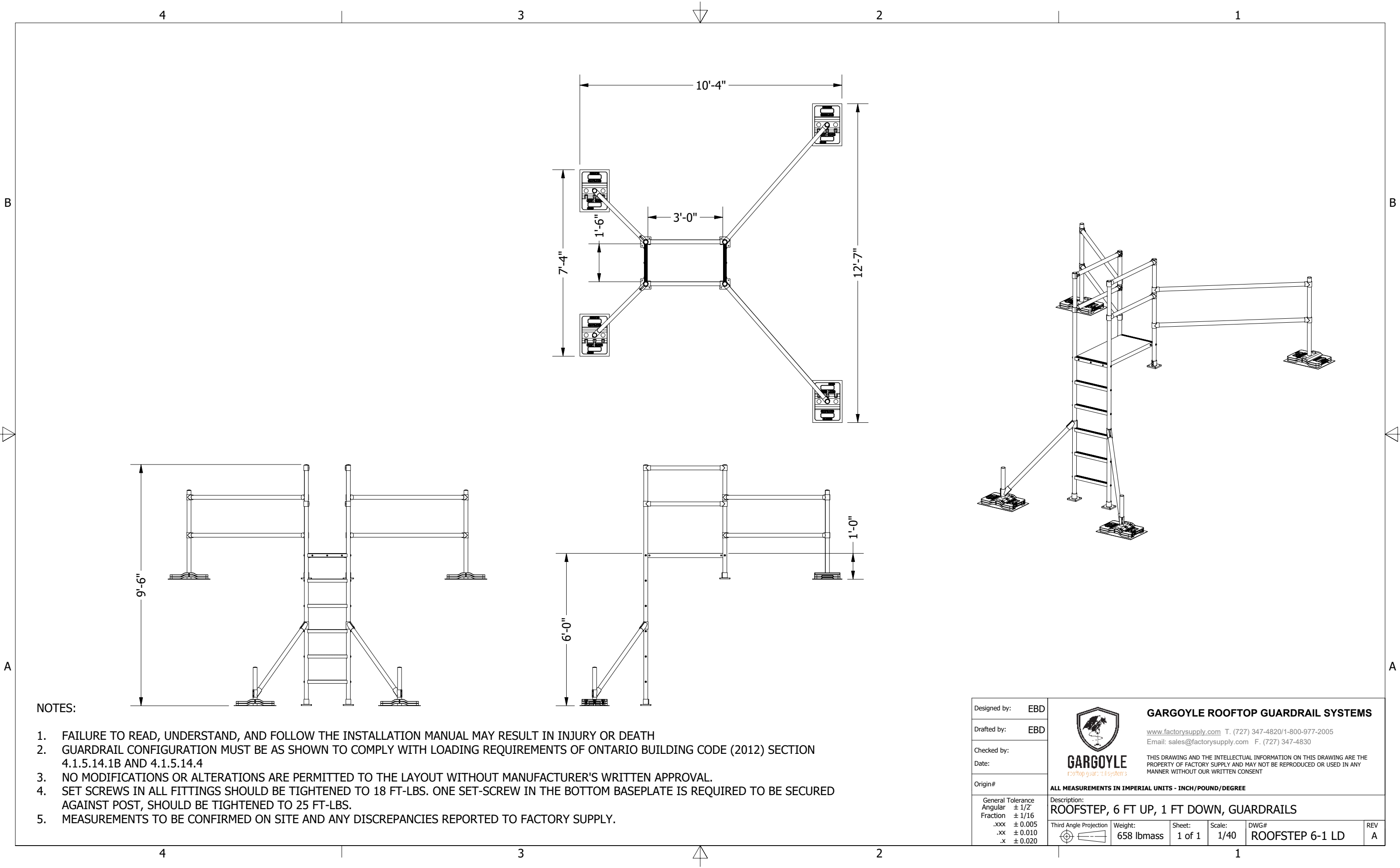
- NOTES:
- 1. FAILURE TO READ, UNDERSTAND, AND FOLLOW THE INSTALLATION MANUAL MAY RESULT IN INJURY OR DEATH
 - 2. GUARDRAIL CONFIGURATION MUST BE AS SHOWN TO COMPLY WITH LOADING REQUIREMENTS OF ONTARIO BUILDING CODE (2012) SECTION 4.1.5.14.1B AND 4.1.5.14.4
 - 3. NO MODIFICATIONS OR ALTERATIONS ARE PERMITTED TO THE LAYOUT WITHOUT MANUFACTURER'S WRITTEN APPROVAL.
 - 4. SET SCREWS IN ALL FITTINGS SHOULD BE TIGHTENED TO 18 FT-LBS. ONE SET-SCREW IN THE BOTTOM BASEPLATE IS REQUIRED TO BE SECURED AGAINST POST, SHOULD BE TIGHTENED TO 25 FT-LBS.
 - 5. MEASUREMENTS TO BE CONFIRMED ON SITE AND ANY DISCREPANCIES REPORTED TO FACTORY SUPPLY.

Designed by:	EBD	<div></div> <div>GARGOYLE rooftop guardrail systems</div> <div>GARGOYLE ROOFTOP GUARDRAIL SYSTEMS</div> <div>www.factorysupply.com T. (727) 347-4820/1-800-977-2005 Email: sales@factorysupply.com F. (727) 347-4830</div> <div>THIS DRAWING AND THE INTELLECTUAL INFORMATION ON THIS DRAWING ARE THE PROPERTY OF FACTORY SUPPLY AND MAY NOT BE REPRODUCED OR USED IN ANY MANNER WITHOUT OUR WRITTEN CONSENT</div>				
Drafted by:	EBD					
Checked by:						
Date:						
Origin#		ALL MEASUREMENTS IN IMPERIAL UNITS - INCH/POUND/DEGREE				
General Tolerance Angular Fraction		Description: ROOFSTEP, 5 FT UP, 2 FT DOWN, GUARDRAILS				
± 1/2"						
± 1/16						
.xxx ± 0.005						
.xx ± 0.010						
.x ± 0.020						
Third Angle Projection		Weight:	Sheet:	Scale:	DWG#	REV
		658 lbmass	1 of 1	1/40	ROOFSTEP 5-2 LD	A




- NOTES:
- 1. FAILURE TO READ, UNDERSTAND, AND FOLLOW THE INSTALLATION MANUAL MAY RESULT IN INJURY OR DEATH
 - 2. GUARDRAIL CONFIGURATION MUST BE AS SHOWN TO COMPLY WITH LOADING REQUIREMENTS OF ONTARIO BUILDING CODE (2012) SECTION 4.1.5.14.1B AND 4.1.5.14.4
 - 3. NO MODIFICATIONS OR ALTERATIONS ARE PERMITTED TO THE LAYOUT WITHOUT MANUFACTURER'S WRITTEN APPROVAL.
 - 4. SET SCREWS IN ALL FITTINGS SHOULD BE TIGHTENED TO 18 FT-LBS. ONE SET-SCREW IN THE BOTTOM BASEPLATE IS REQUIRED TO BE SECURED AGAINST POST, SHOULD BE TIGHTENED TO 25 FT-LBS.
 - 5. MEASUREMENTS TO BE CONFIRMED ON SITE AND ANY DISCREPANCIES REPORTED TO FACTORY SUPPLY.

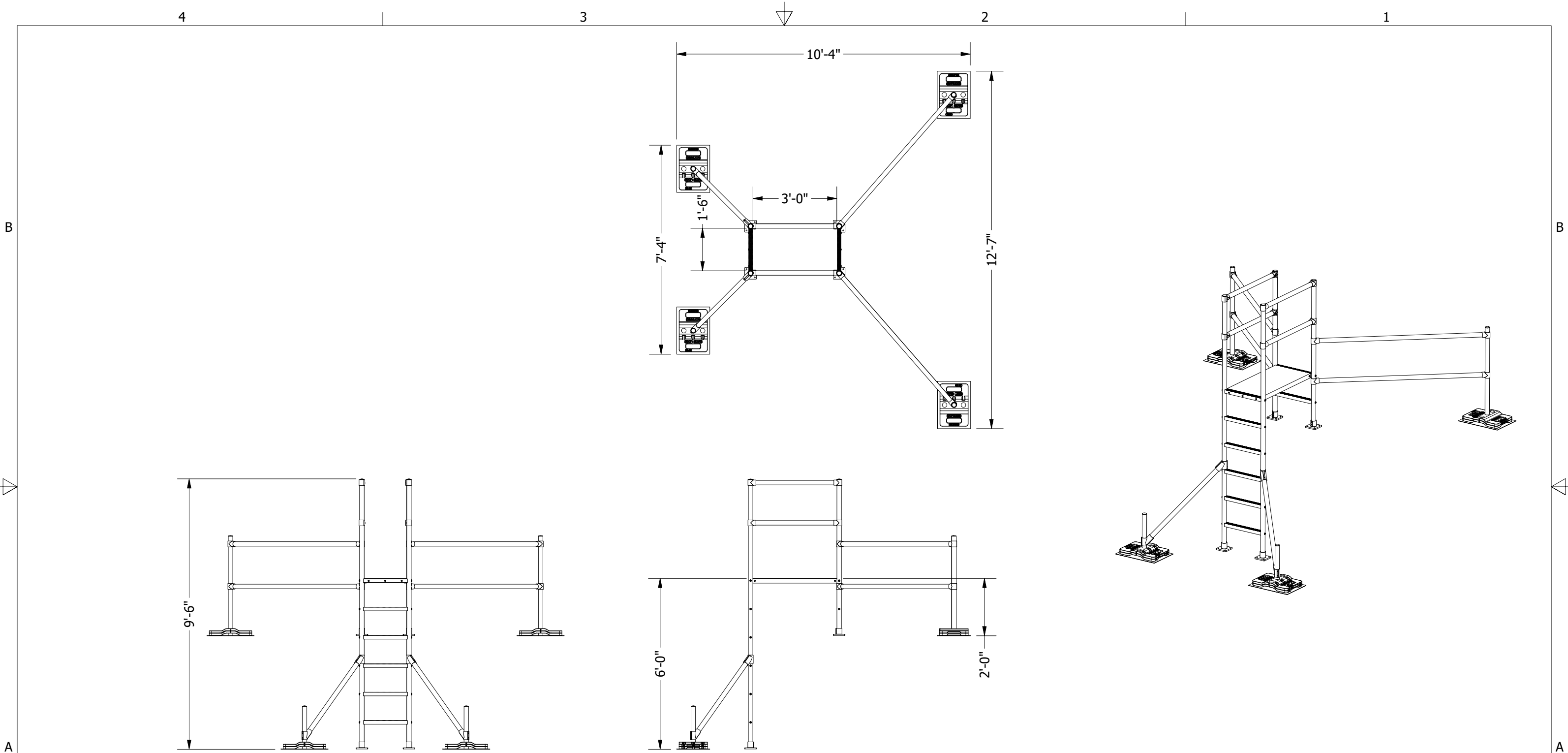
Designed by:	EBD	<div>GARGOYLE rooftop guardrail systems</div> <div>GARGOYLE ROOFTOP GUARDRAIL SYSTEMS</div> <div>www.factorysupply.com T. (727) 347-4820/1-800-977-2005 Email: sales@factorysupply.com F. (727) 347-4830</div> <div>THIS DRAWING AND THE INTELLECTUAL INFORMATION ON THIS DRAWING ARE THE PROPERTY OF FACTORY SUPPLY AND MAY NOT BE REPRODUCED OR USED IN ANY MANNER WITHOUT OUR WRITTEN CONSENT</div>			
Drafted by:	EBD				
Checked by:					
Date:					
Origin#		ALL MEASUREMENTS IN IMPERIAL UNITS - INCH/POUND/DEGREE			
General Tolerance Angular ± 1/2° Fraction ± 1/16 .xxx ± 0.005 .xx ± 0.010 .x ± 0.020	Description: ROOFSTEP, 5 FT UP, 3 FT DOWN, GUARDRAILS				
Third Angle Projection	Weight: 676 lbmass	Sheet: 1 of 1	Scale: 1/40	DWG# ROOFSTEP 5-3 LD	REV A





NOTES:

1. FAILURE TO READ, UNDERSTAND, AND FOLLOW THE INSTALLATION MANUAL MAY RESULT IN INJURY OR DEATH
2. GUARDRAIL CONFIGURATION MUST BE AS SHOWN TO COMPLY WITH LOADING REQUIREMENTS OF ONTARIO BUILDING CODE (2012) SECTION 4.1.5.14.1B AND 4.1.5.14.4
3. NO MODIFICATIONS OR ALTERATIONS ARE PERMITTED TO THE LAYOUT WITHOUT MANUFACTURER'S WRITTEN APPROVAL.
4. SET SCREWS IN ALL FITTINGS SHOULD BE TIGHTENED TO 18 FT-LBS. ONE SET-SCREW IN THE BOTTOM BASEPLATE IS REQUIRED TO BE SECURED AGAINST POST, SHOULD BE TIGHTENED TO 25 FT-LBS.
5. MEASUREMENTS TO BE CONFIRMED ON SITE AND ANY DISCREPANCIES REPORTED TO FACTORY SUPPLY.

Designed by:	EBD	 GARGOYLE ROOFTOP GUARDRAIL SYSTEMS www.factorysupply.com T. (727) 347-4820/1-800-977-2005 Email: sales@factorysupply.com F. (727) 347-4830 <small>THIS DRAWING AND THE INTELLECTUAL INFORMATION ON THIS DRAWING ARE THE PROPERTY OF FACTORY SUPPLY AND MAY NOT BE REPRODUCED OR USED IN ANY MANNER WITHOUT OUR WRITTEN CONSENT</small>					
Drafted by:	EBD						
Checked by:							
Date:							
Origin#		ALL MEASUREMENTS IN IMPERIAL UNITS - INCH/POUND/DEGREE					
General Tolerance	± 1/2"	Description: ROOFSTEP, 6 FT UP, 1 FT DOWN, GUARDRAILS					
Angular	± 1/16						
Fraction	± 0.005						
.xxx	± 0.010						
.xx	± 0.020	Third Angle Projection	Weight: 658 lbmass	Sheet: 1 of 1	Scale: 1/40	DWG# ROOFSTEP 6-1 LD	REV A



- NOTES:
- 1. FAILURE TO READ, UNDERSTAND, AND FOLLOW THE INSTALLATION MANUAL MAY RESULT IN INJURY OR DEATH
 - 2. GUARDRAIL CONFIGURATION MUST BE AS SHOWN TO COMPLY WITH LOADING REQUIREMENTS OF ONTARIO BUILDING CODE (2012) SECTION 4.1.5.14.1B AND 4.1.5.14.4
 - 3. NO MODIFICATIONS OR ALTERATIONS ARE PERMITTED TO THE LAYOUT WITHOUT MANUFACTURER'S WRITTEN APPROVAL.
 - 4. SET SCREWS IN ALL FITTINGS SHOULD BE TIGHTENED TO 18 FT-LBS. ONE SET-SCREW IN THE BOTTOM BASEPLATE IS REQUIRED TO BE SECURED AGAINST POST, SHOULD BE TIGHTENED TO 25 FT-LBS.
 - 5. MEASUREMENTS TO BE CONFIRMED ON SITE AND ANY DISCREPANCIES REPORTED TO FACTORY SUPPLY.

Designed by:	EBD	<div><div>GARGOYLE rooftop guardrail systems</div><div>GARGOYLE ROOFTOP GUARDRAIL SYSTEMS</div><div>www.factorysupply.com T. (727) 347-4820/1-800-977-2005 Email: sales@factorysupply.com F. (727) 347-4830</div><div>THIS DRAWING AND THE INTELLECTUAL INFORMATION ON THIS DRAWING ARE THE PROPERTY OF FACTORY SUPPLY AND MAY NOT BE REPRODUCED OR USED IN ANY MANNER WITHOUT OUR WRITTEN CONSENT</div></div>				
Drafted by:	EBD					
Checked by:						
Date:						
Origin#		ALL MEASUREMENTS IN IMPERIAL UNITS - INCH/POUND/DEGREE				
General Tolerance Angular Fraction		Description: ROOFSTEP, 6 FT UP, 2 FT DOWN, GUARDRAILS				
± 1/2"						
± 1/16						
.xxx ± 0.005						
.xx ± 0.010						
.x ± 0.020						
Third Angle Projection		Weight:	Sheet:	Scale:	DWG#	REV
		676 lbmass	1 of 1	1/40	ROOFSTEP 6-2 LD	A