
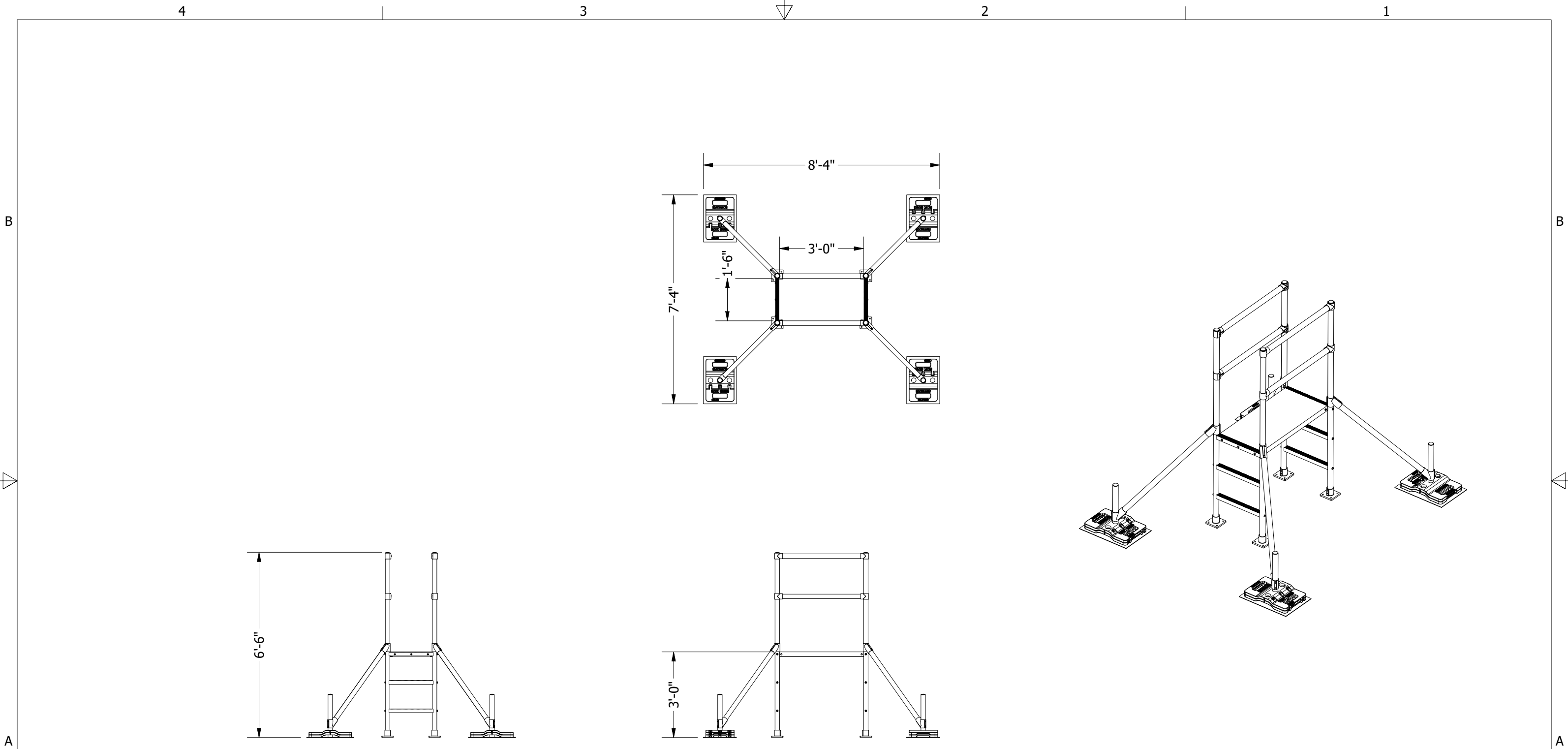



NOTES:

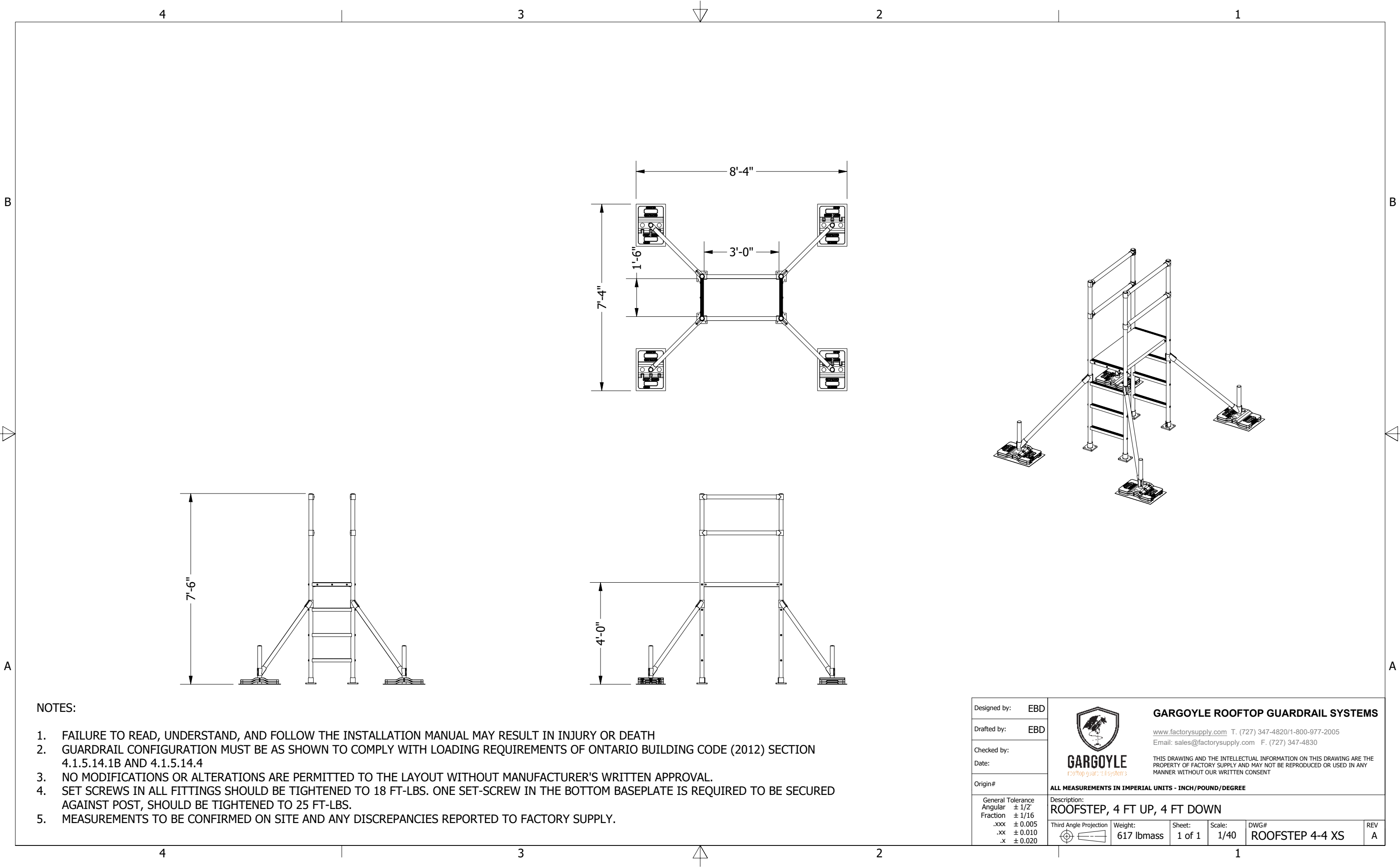
- 1. FAILURE TO READ, UNDERSTAND, AND FOLLOW THE INSTALLATION MANUAL MAY RESULT IN INJURY OR DEATH
- 2. GUARDRAIL CONFIGURATION MUST BE AS SHOWN TO COMPLY WITH LOADING REQUIREMENTS OF ONTARIO BUILDING CODE (2012) SECTION 4.1.5.14.1B AND 4.1.5.14.4
- 3. NO MODIFICATIONS OR ALTERATIONS ARE PERMITTED TO THE LAYOUT WITHOUT MANUFACTURER'S WRITTEN APPROVAL.
- 4. SET SCREWS IN ALL FITTINGS SHOULD BE TIGHTENED TO 18 FT-LBS. ONE SET-SCREW IN THE BOTTOM BASEPLATE IS REQUIRED TO BE SECURED AGAINST POST, SHOULD BE TIGHTENED TO 25 FT-LBS.
- 5. MEASUREMENTS TO BE CONFIRMED ON SITE AND ANY DISCREPANCIES REPORTED TO FACTORY SUPPLY.

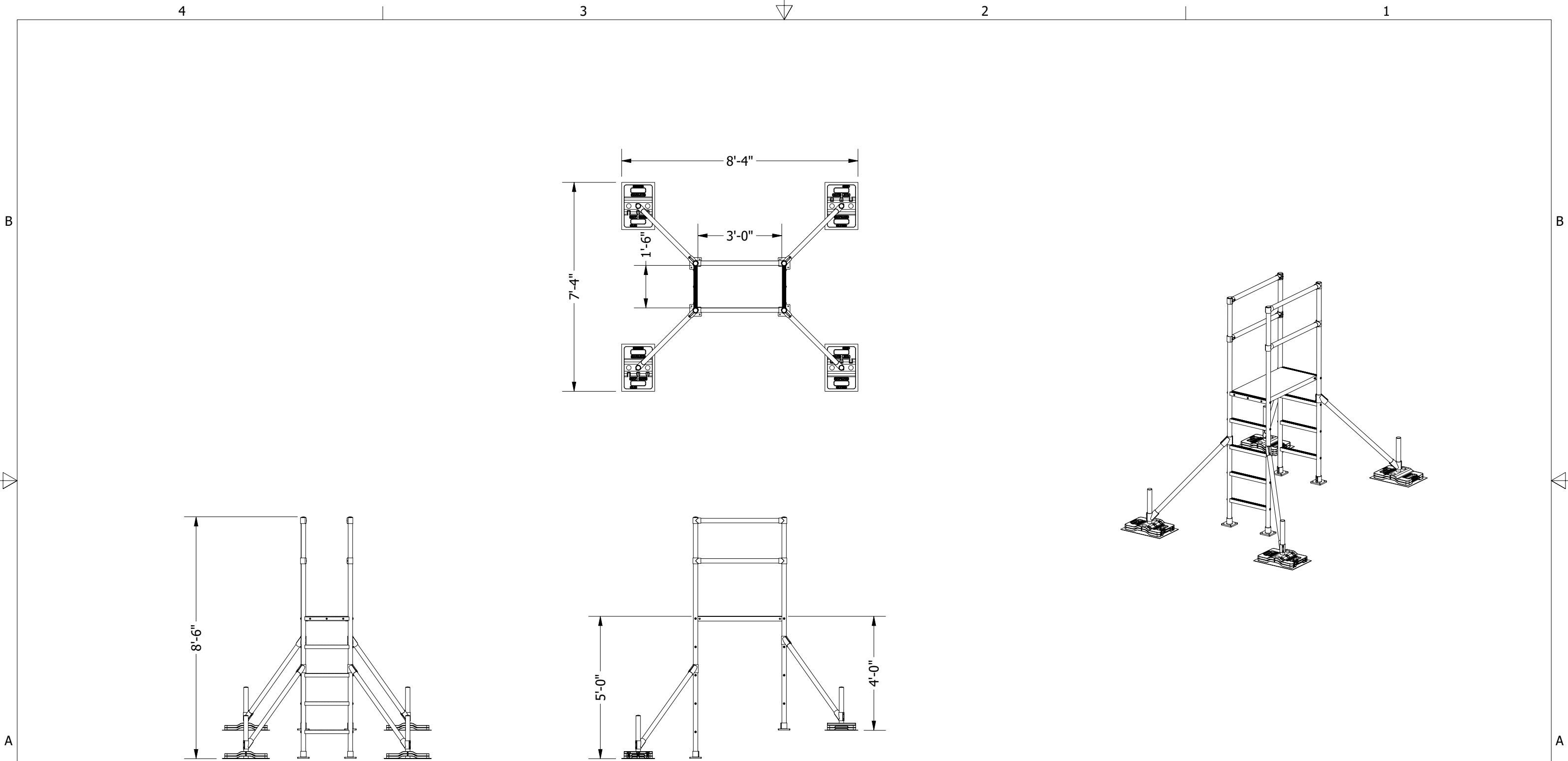
Designed by:	EBD	 <b>GARGOYLE</b> rooftop guardrail system 3	<b>GARGOYLE ROOFTOP GUARDRAIL SYSTEMS</b>				
Drafted by:	EBD		<a href="http://www.factorysupply.com">www.factorysupply.com</a> T. (727) 347-4820/1-800-977-2005 Email: <a href="mailto:sales@factorysupply.com">sales@factorysupply.com</a> F. (727) 347-4830				
Checked by:			THIS DRAWING AND THE INTELLECTUAL INFORMATION ON THIS DRAWING ARE THE PROPERTY OF FACTORY SUPPLY AND MAY NOT BE REPRODUCED OR USED IN ANY MANNER WITHOUT OUR WRITTEN CONSENT				
Date:							
Origin#		<b>ALL MEASUREMENTS IN IMPERIAL UNITS - INCH/POUND/DEGREE</b>					
General Tolerance	± 1/2"	Description: <b>ROOFSTEP, 2 FT UP, 2 FT DOWN</b>					
Angular	± 1/16						
Fraction	± 0.005						
.xxx	± 0.010						
.xx	± 0.020	Third Angle Projection	Weight: 547 lbmass	Sheet: 1 of 1	Scale: 1/40	DWG# ROOFSTEP 2-2 XS	REV A



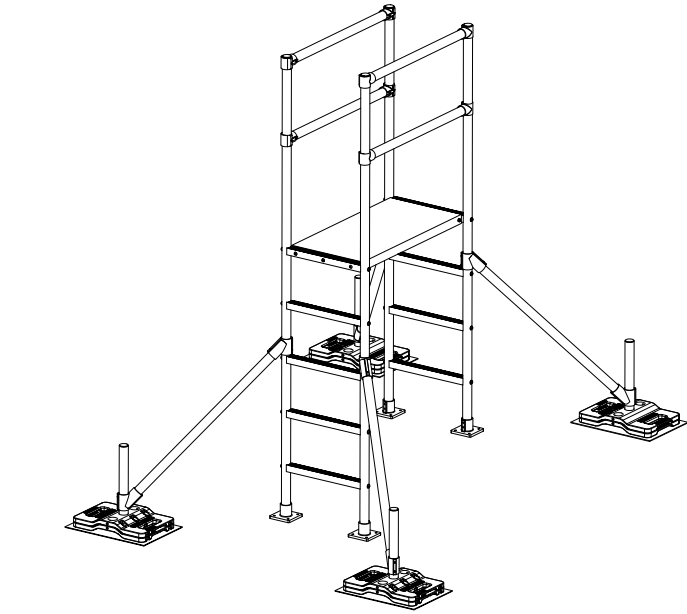
- NOTES:
1. FAILURE TO READ, UNDERSTAND, AND FOLLOW THE INSTALLATION MANUAL MAY RESULT IN INJURY OR DEATH
  2. GUARDRAIL CONFIGURATION MUST BE AS SHOWN TO COMPLY WITH LOADING REQUIREMENTS OF ONTARIO BUILDING CODE (2012) SECTION 4.1.5.14.1B AND 4.1.5.14.4
  3. NO MODIFICATIONS OR ALTERATIONS ARE PERMITTED TO THE LAYOUT WITHOUT MANUFACTURER'S WRITTEN APPROVAL.
  4. SET SCREWS IN ALL FITTINGS SHOULD BE TIGHTENED TO 18 FT-LBS. ONE SET-SCREW IN THE BOTTOM BASEPLATE IS REQUIRED TO BE SECURED AGAINST POST, SHOULD BE TIGHTENED TO 25 FT-LBS.
  5. MEASUREMENTS TO BE CONFIRMED ON SITE AND ANY DISCREPANCIES REPORTED TO FACTORY SUPPLY.



Designed by: EBD	 <b>GARGOYLE</b> rooftop guardrail systems	<b>GARGOYLE ROOFTOP GUARDRAIL SYSTEMS</b>				
Drafted by: EBD		www.factorysupply.com T. (727) 347-4820/1-800-977-2005 Email: sales@factorysupply.com F. (727) 347-4830				
Checked by:		THIS DRAWING AND THE INTELLECTUAL INFORMATION ON THIS DRAWING ARE THE PROPERTY OF FACTORY SUPPLY AND MAY NOT BE REPRODUCED OR USED IN ANY MANNER WITHOUT OUR WRITTEN CONSENT				
Date:						
Origin#	ALL MEASUREMENTS IN IMPERIAL UNITS - INCH/POUND/DEGREE					
General Tolerance Angular ± 1/2° Fraction ± 1/16 .xxx ± 0.005 .xx ± 0.010 .x ± 0.020	Description: <b>ROOFSTEP, 3 FT UP, 3 FT DOWN</b>					
Third Angle Projection	Weight: 582 lbmass	Sheet: 1 of 1	Scale: 1/40	DWG# ROOFSTEP 3-3 XS	REV A	

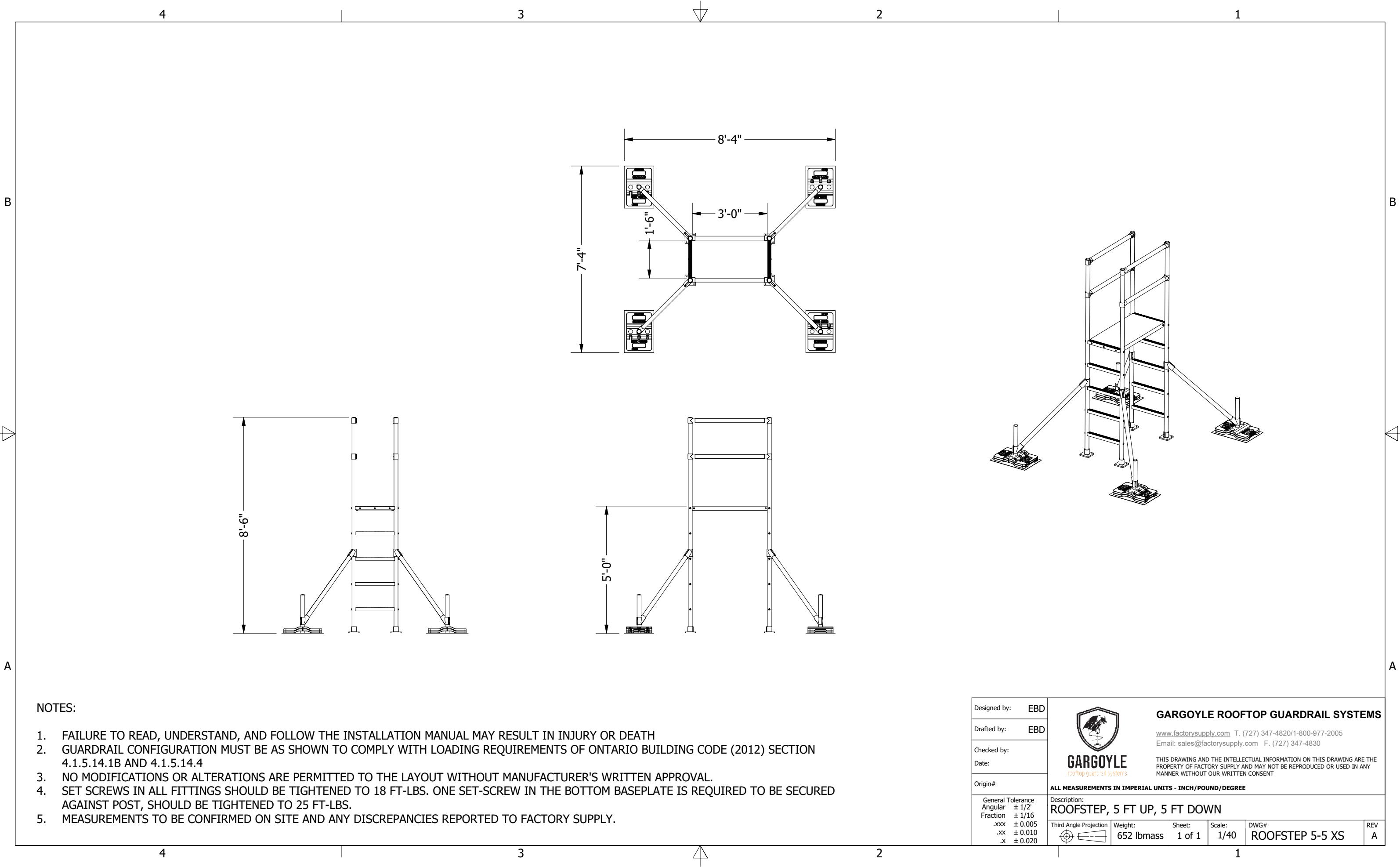


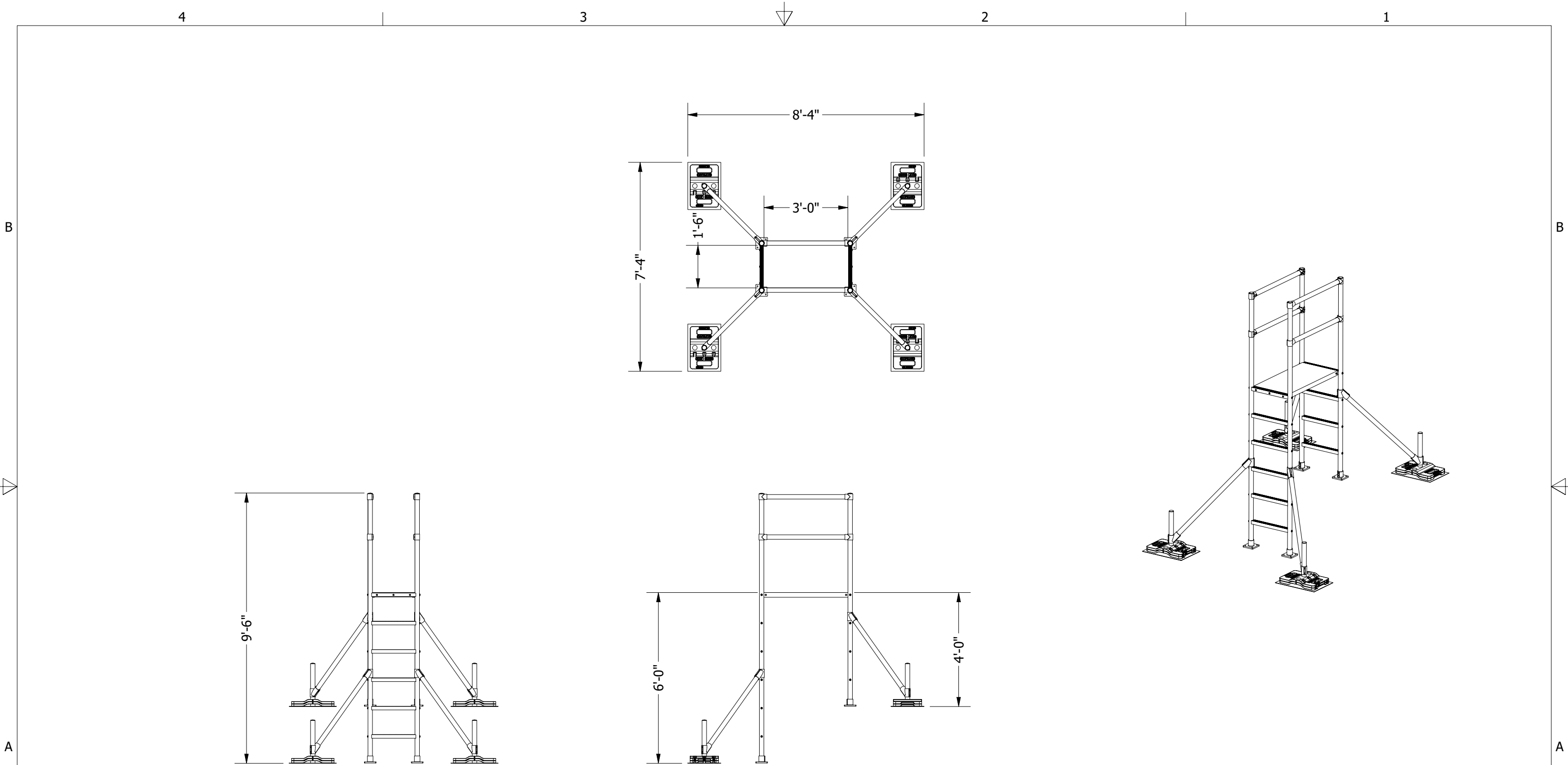


- NOTES:
- 1. FAILURE TO READ, UNDERSTAND, AND FOLLOW THE INSTALLATION MANUAL MAY RESULT IN INJURY OR DEATH
  - 2. GUARDRAIL CONFIGURATION MUST BE AS SHOWN TO COMPLY WITH LOADING REQUIREMENTS OF ONTARIO BUILDING CODE (2012) SECTION 4.1.5.14.1B AND 4.1.5.14.4
  - 3. NO MODIFICATIONS OR ALTERATIONS ARE PERMITTED TO THE LAYOUT WITHOUT MANUFACTURER'S WRITTEN APPROVAL.
  - 4. SET SCREWS IN ALL FITTINGS SHOULD BE TIGHTENED TO 18 FT-LBS. ONE SET-SCREW IN THE BOTTOM BASEPLATE IS REQUIRED TO BE SECURED AGAINST POST, SHOULD BE TIGHTENED TO 25 FT-LBS.
  - 5. MEASUREMENTS TO BE CONFIRMED ON SITE AND ANY DISCREPANCIES REPORTED TO FACTORY SUPPLY.




Designed by:	EBD	<div> <b>GARGOYLE</b> rooftop guardrail systems</div> <div><b>GARGOYLE ROOFTOP GUARDRAIL SYSTEMS</b></div> <div><a href="http://www.factorysupply.com">www.factorysupply.com</a> T. (727) 347-4820/1-800-977-2005 Email: <a href="mailto:sales@factorysupply.com">sales@factorysupply.com</a> F. (727) 347-4830</div> <div>THIS DRAWING AND THE INTELLECTUAL INFORMATION ON THIS DRAWING ARE THE PROPERTY OF FACTORY SUPPLY AND MAY NOT BE REPRODUCED OR USED IN ANY MANNER WITHOUT OUR WRITTEN CONSENT</div>
Drafted by:	EBD	
Checked by:		
Date:		
Origin#		
<b>ALL MEASUREMENTS IN IMPERIAL UNITS - INCH/POUND/DEGREE</b>		
Description:		<b>ROOFSTEP, 5 FT UP, 4 FT DOWN</b>
General Tolerance	± 1/2"	<div><div>Third Angle Projection</div></div> <div>Weight: 635 lbmass</div> <div>Sheet: 1 of 1</div> <div>Scale: 1/40</div> <div>DWG# <b>ROOFSTEP 5-4 XS</b></div>
Angular	± 1/16	
Fraction	± 0.005	
.xxx	± 0.010	
.xx	± 0.020	
.x		REV A





NOTES:

1. FAILURE TO READ, UNDERSTAND, AND FOLLOW THE INSTALLATION MANUAL MAY RESULT IN INJURY OR DEATH
2. GUARDRAIL CONFIGURATION MUST BE AS SHOWN TO COMPLY WITH LOADING REQUIREMENTS OF ONTARIO BUILDING CODE (2012) SECTION 4.1.5.14.1B AND 4.1.5.14.4
3. NO MODIFICATIONS OR ALTERATIONS ARE PERMITTED TO THE LAYOUT WITHOUT MANUFACTURER'S WRITTEN APPROVAL.
4. SET SCREWS IN ALL FITTINGS SHOULD BE TIGHTENED TO 18 FT-LBS. ONE SET-SCREW IN THE BOTTOM BASEPLATE IS REQUIRED TO BE SECURED AGAINST POST, SHOULD BE TIGHTENED TO 25 FT-LBS.
5. MEASUREMENTS TO BE CONFIRMED ON SITE AND ANY DISCREPANCIES REPORTED TO FACTORY SUPPLY.

Designed by: EBD	 <b>GARGOYLE</b> rooftop guardrail systems	<b>GARGOYLE ROOFTOP GUARDRAIL SYSTEMS</b>				
Drafted by: EBD		<a href="http://www.factorysupply.com">www.factorysupply.com</a> T. (727) 347-4820/1-800-977-2005 Email: <a href="mailto:sales@factorysupply.com">sales@factorysupply.com</a> F. (727) 347-4830				
Checked by:		THIS DRAWING AND THE INTELLECTUAL INFORMATION ON THIS DRAWING ARE THE PROPERTY OF FACTORY SUPPLY AND MAY NOT BE REPRODUCED OR USED IN ANY MANNER WITHOUT OUR WRITTEN CONSENT				
Date:						
Origin#	ALL MEASUREMENTS IN IMPERIAL UNITS - INCH/POUND/DEGREE					
General Tolerance Angular ± 1/2° Fraction ± 1/16 .xxx ± 0.005 .xx ± 0.010 .x ± 0.020	Description: <b>ROOFSTEP, 6 FT UP, 4 FT DOWN</b>					
Third Angle Projection	Weight: 653 lbmass	Sheet: 1 of 1	Scale: 1/40	DWG# ROOFSTEP 6-4 XS	REV A	

